

ACE2-Expressing Endothelial Cells in Aging Mouse Brain

Su Bin Lim¹, Valina L. Dawson^{1,2,3,4*}, Ted M. Dawson^{1,3,4,5*} and Sung-Ung Kang^{1*}

¹Department of Neuroregeneration and Stem Cell Programs, Johns Hopkins University School of Medicine, Baltimore, MD 21205, USA

²Department of Physiology, University of California, Davis, USA

³Department of Neurology, Johns Hopkins University School of Medicine, Baltimore, MD 21205, USA

⁴Department of Neuroscience, Johns Hopkins University School of Medicine, Baltimore, MD 21205, USA

⁵Department of Pharmacology and Molecular Sciences, Johns Hopkins University School of Medicine, Baltimore, MD 21205, USA

Abstract

Angiotensin-Converting Enzyme 2 (ACE2) is a key receptor mediating the entry of SARS-CoV-2 into the host cell. Through a systematic analysis of publicly available mouse brain sc/snRNA-seq data, we found that ACE2 is specifically expressed in small sub-populations of endothelial cells and mural cells, namely pericytes and vascular smooth muscle cells. Further, functional changes in viral mRNA transcription and replication, and impaired blood-brain barrier regulation were most prominently implicated in the aged, ACE2-expressing endothelial cells, when compared to the young adult mouse brains. Concordant EC transcriptomic changes were further found in normal aged human brains. Overall, this work reveals an outline of ACE2 distribution in the mouse brain and identifies putative brain host cells that may underlie the selective susceptibility of the aging brain to viral infection.

Keywords: Brain • Aging • ACE2-expressing endothelial cells • Transcriptomic

Introduction

In addition to the well-known respiratory symptoms, COVID-19 patients suffer from a loss of smell and taste, headache, impaired consciousness, and nerve pain [1]. Raising possibility of virus infiltration in the nervous system, including brain. Despite cases emerging of COVID-19 patients with neurologic manifestations, potential neurotropic mechanisms underlying SARS-CoV-2-mediated entry into the cells of the brain are largely unexplored.

Evidenced by transgenic mice models [2,3]. The evolutionarily-related coronaviruses, such as SARS-CoV and MERS-CoV, can invade the brain by replicating and spreading through the nasal cavity, and possibly olfactory bulbs located in close proximity to the frontal lobes of the brain [4]. Once inside the brain, viruses can harm the brain directly and indirectly by infecting the cells and myelin sheaths, and by activating microglia, which may in turn consume healthy neurons to induce neuroinflammation and neurodegeneration [5].

Many of the observed neurological symptoms observed may in part be explained by a primary vasculopathy and hypercoagulability [6]. As endothelial dysfunction and the resulting clotting are increasingly being observed in patients with severe COVID-19 infection [7-9]. Consistent with these findings, the first pathologic evidence of direct viral infection of the EC and lymphocytic endotheliitis has been found in multiple organs, including lung, heart, kidney and liver, in a series of COVID-19 patients [10].

In contrast, recent clinical findings, including an MRI study [11]. And immunohistochemistry and RT-qPCR analyses [12,13]. Did not observe any signs of encephalitis from postmortem brain examination of COVID-19

patients. Similarly, postmortem analysis of SARS-CoV-2-exposed mice transgenically expressing ACE2 via mouse ACE2 promoter failed to detect the virus in the brain [14]. In light of such controversy regarding neuropathological features, a more comprehensive assessment on the distribution of ACE2 in a cell type-specific manner is required to identify putative brain host cells.

Here, we analyzed publicly available and spatially rich brain RNA-seq datasets to assess ACE2 distribution in mouse brains at the single-cell and single-nuclei level. We found that ACE2 was consistently expressed in small subpopulations of Endothelial Cells (ECs) and mural cells in all the analyzed datasets, in which the impaired blood-brain barrier was further implicated in the aged brains. These findings altogether may hold potential to initiate new avenues of research on specific cells types (EC and vascular mural cells) that remain poorly understood particularly in relation to the aging and viral infection in the brain.

Methods

Mouse brain sc/snRNA-seq data and analysis

Of all the independent studies retrieved with the term "ACE2" from the Single Cell Portal 11 sc/snRNA-seq datasets were derived from (1) adult (young or old) mouse brains, and had (2) author-defined cell type annotations including endothelial cells (EC, PC, or VSMC). A total of 801,658 cells were analyzed in this study, based on the organ (i.e., brain) and species of origin (i.e., mouse), and diseased status (i.e., normal). 2-D tSNE/UMAP plots (colored by cell type) and box plots for cell type-specific ACE2 expression presented in this study were generated by the Single Cell Portal. t-SNE visualization (colored by age) and 25 cell type-specific DE

***Corresponding Author:** Sung-Ung kang, Department of Neuroregeneration and Stem Cell Programs, Johns Hopkins University School of Medicine, Baltimore, MD 21205 USA; E-mail: skang34@jhmi.edu

Valina L. Dawson, Johns Hopkins University School of Medicine, Baltimore, MD 21205, USA; E-mail: tdawson@jhmi.edu

Ted M. Dawson, Johns Hopkins University School of Medicine, Baltimore, MD 21205, USA; E-mail: vdawson@jhmi.edu

Copyright: © 2020 Bin Lim, et al. This is an open-access article distributed under the terms of the Creative Commons Attribution License, which permits unrestricted use, distribution, and reproduction in any medium, provided the original author and source are credited.

Received: November 06, 2020; **Accepted:** November 20, 2020 ; **Published:** November 27, 2020

gene lists of the aging mouse brains (T1) were obtained from the advanced interactive data viewer Genes with logGER (Gene Expression Ratio) >0.1 and $FDR < 0.05$ were defined as DEGs, and were analyzed for functional pathway enrichment using GeneAnalytics.

Human brain bulk RNA-seq data and analysis

De-identified processed human brain bulk RNA-seq data and annotation files for sample attributes and subject phenotypes were obtained from the Genotype-Tissue Expression (GTEx) portal. Data from amygdala (n=88), anterior cingulate cortex (n=107), caudate (basal ganglia) (n=142), cerebellar hemisphere (n=121), cerebellum (n=138), hippocampus (n=123), frontal cortex (BA9) (n=124), cortex (n=137), hypothalamus (n=120), nucleus accumbens (basal ganglia) (n=140), putamen (basal ganglia) (n=121), substantia nigra (n=74) were analyzed in this study. A total of 1,435 samples were divided into two age groups: young (<60) and old (≥ 60 years old). Expression levels (in TPM) were compared between the two age groups for all genes (n=56,200) by t-test with multiple testing correction. The performance of Bonferroni correction and False Discovery Rate (FDR)-Benjamini-Hochberg (BH) procedure was assessed using the RStudio (Version 1.2.5019) base function `adjust`. The R `qvalue` package from Bioconductor was used to assess the performance of q-value approach [15]. The R `biomaRt` package from Bioconductor was used to convert mouse EC DEGs to human gene symbols (`hgnc`) using `getLDS()` function [16]. Gene Set Enrichment Analysis (GSEA v4.0.3; [17]. was used to assess EC DEGs (EC up- and down-regulated genes) in GTEx human brain bulk RNA-seq samples. Following parameters were set to run enrichment tests: (1) number of permutations=1,000, (2) collapse/reshape to gene symbols=no_collapse, and (3) permutation type=gene_set.

Results and Discussion

While our study provides a foundation for a more refined level of analysis of EC and vascular PC, a cell type that remains poorly understood despite its key roles in immune response and micro vascular stability [18]. Our analyses are limited only to the normal aging mouse and human brains, lacking the context of COVID-19 neuropathology [19]. A number of recent sc/

snRNA-seq studies identified ACE2 mRNA in the olfactory neuroepithelium. Although there are no sc/snRNA-seq data derived from postmortem brains of COVID-19 patients to date. The distribution of ACE2 and other genes mediating SARS-CoV-2 entry into the cells of the brain thus remains to be investigated across different regions and cell types.

Using scRNA-seq data derived from normal human brain tissues, Muus, et al. [20]. Have identified ACE2+TMPRSS2+ oligodendrocytes, while Chen et al [21]. Have found subsets of both neuronal (excitatory and inhibitory neurons) and non-neuronal cells (mainly astrocytes and oligodendrocytes) expressing ACE2. These studies, however, have only used a limited number of datasets, which may in part explain the inconsistent results of the identified cell types.

Despite the works that failed to identify direct signs of SARS-CoV-2 infection in the brains of COVID-19 patients [22,23]. other lines of evidence support the neurotropism of the virus, as evidenced by experimental platforms leveraging human induced pluripotent stem cell (iPSC)-derived dopaminergic neurons and an organotypic brain model [24,25]. At this point, more data and systematic molecular evidence will be needed to assess the neuroinvasive potential of SARS-CoV-2 and its potential impact on neuroinflammation and neurodegenerative diseases.

ACE2 is expressed in small sub-populations of ECs and mural cells in the adult mouse brain

A total of 11 adult mouse brains datasets deposited in the Single Cell Portal (SCP) were analyzed in this study (Table 1; see Methods). Datasets lacking vascular cell types were excluded from the data collection and subsequent analyses. The analyzed datasets were derived from diverse single-cell (scRNA-seq) and single-nuclei (snRNA-seq) sequencing technologies, including 10x Genomics, SMART-seq, Drop-seq, and sNucDrop-seq. The number of cells included in the final SCP-generated tSNE/UMAP plots also varied from 1,301 (lowest; T3) to 611,034 (largest; T11).

2 Dataset notation	No. of cells	Region	Sequencing technology	Study name in SCP
Single-cell RNA sequencing (scRNA-seq)				
T1	7,871	Cortex (auditory cortex)	*	Mouse Auditory Cortex Sample
T2	1,301	Cortex (anterior lateral motor cortex)	SMART-seq	A transcriptomic taxonomy of adult mouse anterior lateral motor cortex (ALM)
T3	72,543	Vascular cells	10x Genomics	Aging_mouse_brain_kolab
T4	20,921	Hypothalamus	Drop-seq	A molecular census of arcuate hypothalamus and median eminence cell types
T5	1,679	Cortex (primary visual cortex)	SMART-seq	A transcriptomic taxonomy of adult mouse visual cortex (VISp)
T6	37,069	Whole brain	10x Genomics	Aging Mouse Brain
Single-nucleus RNA sequencing (snRNA-seq)				
T7	3,402	Cortex	10x Genomics	Experiment 2 Mouse PBS
T8	13,861	Midbrain (SNr, SNc, VTA)	10x Genomics	Single nuclei dataset, SN/VTA (MD720)
T9	13,783	Cortex	Multiple†	Single Cell Comparison: Cortex data
T10	611,034	Cerebellum	10x Genomics	A transcriptomic atlas of the mouse cerebellum
T11	18,194	Cortex	sNucDrop-seq	sNucDrop-seq: Dissecting Cell-Type Composition and Activity-Dependent Transcriptional State in Mammalian Brains by Massively Parallel Single-Nucleus RNA-Seq

Note: *Integrated data of the Brain Architecture Portal and the Single Cell Portal

†Smart-seq2, 10x Chromium, Drop-seq, and sci-RNA-seq

Table 1. Mouse brain sc/snRNA-seq datasets analyzed in this study.

Despite the varying library preparation and sequencing technologies, which arguably recover population heterogeneity to different extents, the analysis of the retrieved scRNA-seq datasets (Figures 1A-E) consistently showed increased levels of ACE2 in a small subpopulation of vascular cells, namely Endothelial Cells (EC), Pericytes (PC), and Vascular Smooth Muscle Cells (VSMC), across different brain regions, including auditory cortex (T1), anterior lateral motor cortex (T2), primary visual cortex (T5), hypothalamus (T4), and whole brain (T6). Further, scRNA-seq dataset specifically derived from brain vasculature in young adult and aged mice (T3) confirms the elevated ACE2 expression in subsets of the three identified cell types, which consist of 32.8% of the cell populations (Figure 1C). Similarly, ACE2 mRNAs were enriched in subpopulations of ECs and mural cells of all analyzed snRNA-seq datasets (Figures 2A-E) derived from cortex (T7, T9, T11), midbrain (T8), including Substantia Nigra Pars reticulata (SNr), Substantia Nigra pars compacta (SNc), and Ventral Tegmental Area (VTA), and cerebellum (T10).

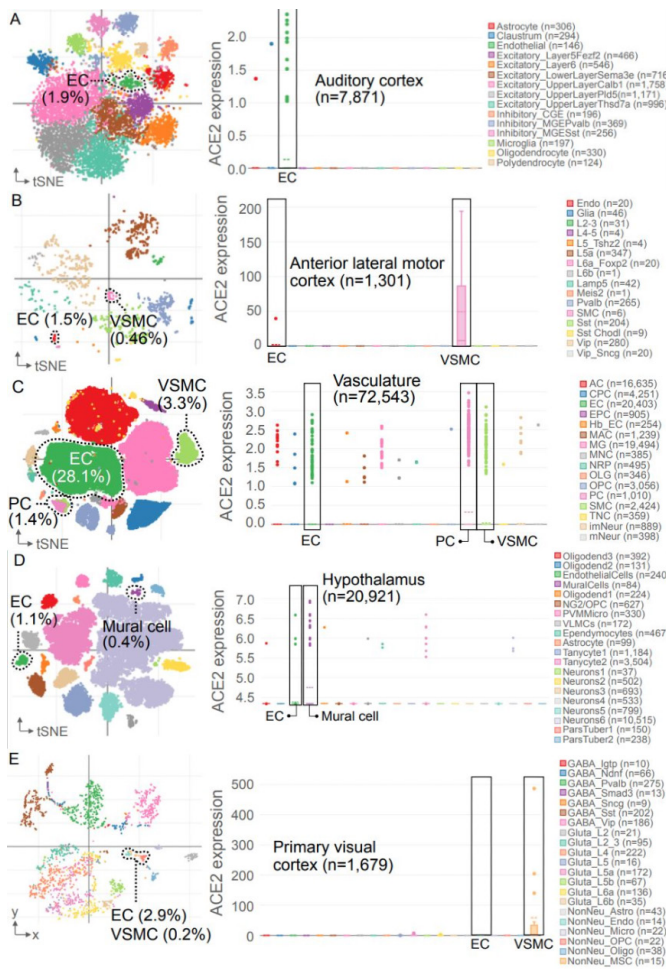


Figure 1. ACE2 expression in SCP scRNA-seq datasets: Brain region-specific t-SNE or UMAP visualization (left) and boxplots (including outliers) of cell type-specific ACE2 expression (right) for Dataset (A) T1, (B) T2, (C) T3, (D) T4, and (E) T5. The percentage of EC, PC and VSMC cell populations are shown. n indicates the total number of cells included in the cell clustering.

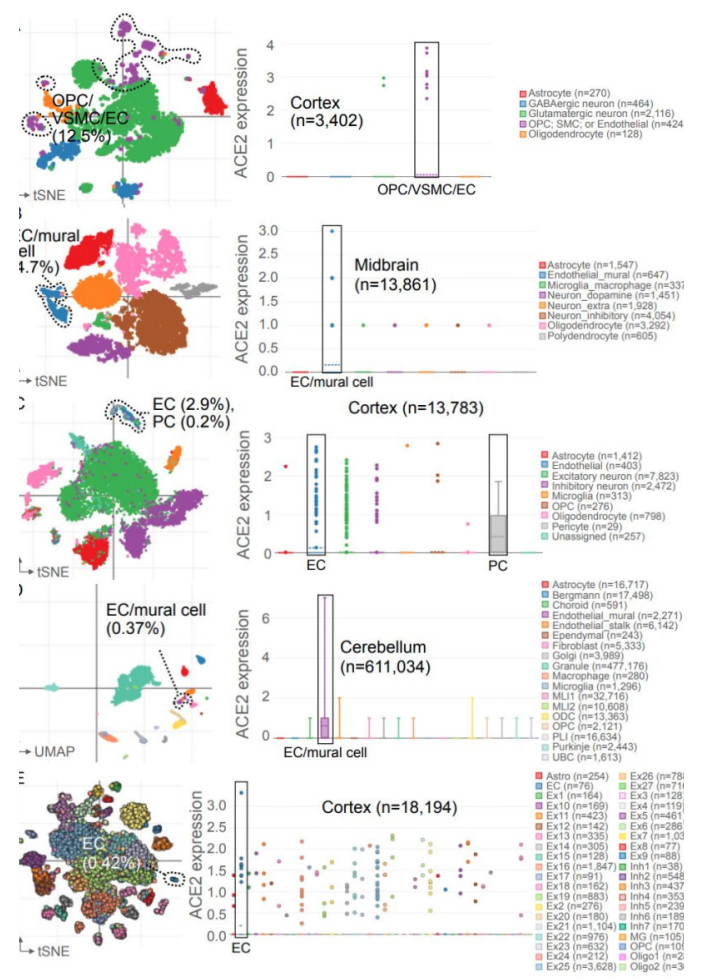


Figure 2. ACE2 expression in SCP snRNA-seq datasets: Brain region-specific t-SNE or UMAP visualization (left) and boxplots (including outliers) of cell type-specific ACE2 expression (right) for Dataset (A) T7, (B) T8, (C) T9, (D) T10, and (E) T11. The percentage of EC, PC and VSMC cell populations are shown. n indicates the total number of cells included in the cell clustering.

Impaired blood-brain barrier is implicated in ECs of the aged brain

We next asked if these identified vascular cell sub-populations expressing ACE2 would be affected by aging and whether they have unique transcriptional changes that are functionally important. Of the 25 major cell types of different lineages (oligodendrocyte, astrocyte, and neuronal lineages, ependymal cells, vasculature cells, and immune cells), EC, PC, and VSMC cell types contribute to a majority of ACE2-expressing cells in the whole mouse brain (T6) (Figures A-3C). tSNE plots (Figure 3A-B) show projection of 37,069 single cells (16,028 young and 21,041 old) derived from the brains of 8 young (2-3 months) and 8 old (21-23 months) mice.

Importantly, we found that the EC was the most Differentially Expressed (DE) cell type in the aged mouse brain, as compared to the young, in which a set of 68 DE genes (DEGs) was further concordantly up- and down-regulated in the aged PCs (Figures D-3E: see method). Given that PCs are in direct contact with ECs, covering between 22% and 99% of the EC surface [26]. Such shared transcriptomic changes highlight defective pericyte-endothelial interface as the most notable change occurring due to aging in mouse brains. Notably, viral RNA transcription/translation, Blood-Brain Barrier (BBB) regulation and glucose/energy metabolism were

among the most prominently enriched functional pathways in the ECs of the aged mouse brain (Figure 3F). These findings altogether indicate that the pericyte-endothelial interface may serve as a potential target and reservoir of virus in the brain, with increased susceptibility to its infection in the aged brain with BBB defects.

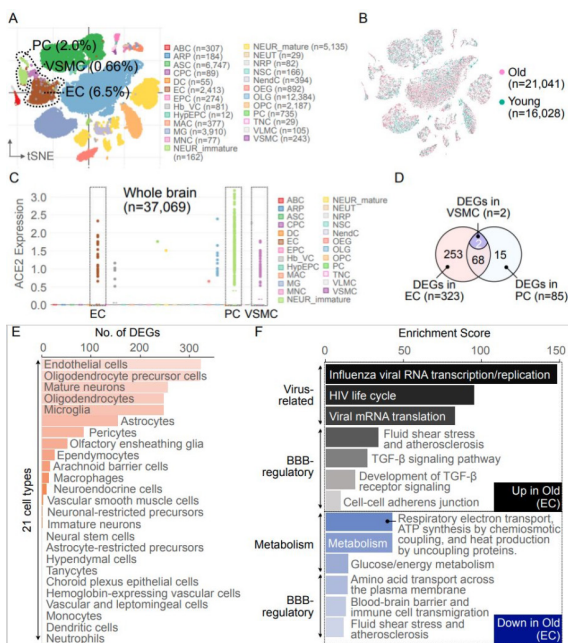


Figure 3. Impaired BBB implicated in ACE2-expressing ECs of the aged brain: (A) t-SNE visualization of the aging mouse brain colored by cell type (left) and age (right). The percentage of EC, PC and VSMC cell populations are shown. (B) Cell type-specific ACE2 expression. n indicates the total number of cells included in the cell clustering. (C) Cell types ranked by the number of DEGs (young vs. old) and Venn diagram depicting the overlapping DEGs in EC, PC and VSMC cell populations. (D) Pathway enrichment analysis (Gene Analytics) of the EC-specific DEGs.

Aged mouse brain EC transcriptomic signatures are enriched in aged human brains

To assess our findings in a human context, we next asked if the identified transcriptomic changes in the aged EC gene signatures would further be conserved and detected in normal human aged brains using bulk RNA-seq data derived from the Genotype-Tissue Expression (GTEx) project database (Table 2). Expression levels (in TPM) of human orthologs of the aged EC DEGs matched in the GTEx data were compared between the young (<60) and old (≥ 60 years) human samples (see Methods). Of all genes evaluated (n=56,200), 8,215 (15%) showed the expression level significantly different (t-test q-value ≤ 0.05; see Methods) while the expression levels of 37% of EC DEGs were different in the old group from that of the young population, indicating concordant EC transcriptomic changes in normal aged human brains (Figures 4A and 4B). This conclusion was further supported by Gene Set Enrichment Analysis (GSEA) results, displaying a significant enrichment of the aged (n=141) and young (n=133) mouse EC DEGs in the old (n=814) and young (n=621) human samples, respectively (Figure 4C). In conclusion, we have identified specific EC signatures that are functionally important and related to the aging and viral infection in the brain.

Brain region	# of total samples	# of young (< 60 yrs)	# of old (≥ 60 yrs)	# of female	# of male
Amygdala	88	39	49	25	63
Anterior cingulate cortex	107	47	60	30	77
Caudate (basal ganglia)	142	65	77	35	107
Cerebellar hemisphere	121	54	67	34	87

Cerebellum	138	62	76	35	103
Hippocampus	123	48	75	34	89
Frontal cortex (BA9)	124	50	74	32	92
Cortex	137	65	72	41	96
Hypothalamus	120	47	73	30	90
Nucleus accumbens (basal ganglia)	140	62	78	34	106
Putamen (basal ganglia)	121	55	66	25	96
Substantia nigra	74	27	47	21	53
# of total samples	1435	621	814	376	1059

Table 2. Human brain bulk RNA-seq data (GTEx) analyzed in this study.

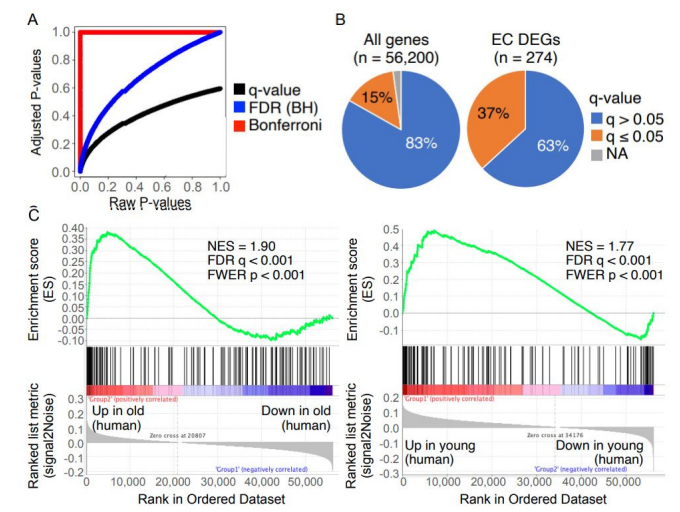


Figure 4. Aged mouse brain EC DEGs assessed in human brain bulk RNA-seq samples (GTEx): (A) Adjusted P-values via three different correction methods and their relationship to raw P-values (t-test). (B) Pie charts depicting the proportion (%) of all genes (left) and EC DEGs (right). (C) GSEA-generated enrichment plots for the aged (left) and the young mouse EC DEGs (right) gene sets. Normalized Enrichment Score (NES); False Discovery Rate (FDR); Family-Wise Error Rate (FWER).

Conclusion

We have compared expression levels (in TPM) of human orthologs of the aged EC DEGs matched in the GTEx data between the young (<60) and old (≥ 60 years) human samples. Of all genes evaluated (n=56,200), 8,215 (15%) showed the expression level significantly different (t-test q-value ≤ 0.05; see Methods) while the expression levels of 37% of EC DEGs were different in the old group from that of the young population, indicating concordant EC transcriptomic changes in normal aged human brains. This conclusion was further supported by Gene Set Enrichment Analysis (GSEA) results, displaying a significant enrichment of the aged (n=141) and young (n=133) mouse EC DEGs in the old (n=814) and young (n=621) human samples, respectively. In conclusion, we have identified specific EC signatures that are functionally important and related to the aging and viral infection in the brain.

Acknowledgements

This work was supported by grants from NIH/NIA AG059686. T.M.D. is the Leonard and Madlyn Abramson Professor in Neurodegenerative Diseases.

Author contributions

V.L.D., T.M.D., and S.U.K. supervised the project; S.B.L., V.L.D., T.M.D. and S.U.K. formulated the hypothesis; S.B.L. and S.U.K. performed research; S.B.L., V.L.D., T.M.D., and S.U.K. wrote the paper.

Competing interests

The authors declare no competing interest.

References

- Ling, Mao, Huijuan Jin, Mengdie Wang and Yu Hu et al. "Neurologic Manifestations of Hospitalized Patients With Coronavirus Disease 2019 in Wuhan, China." *JAMA Neurol* 77(2020): 683-690.
- Jason, Netland, David Meyerholz K, Steven Moore and Martin Cassell et al. "Severe Acute Respiratory Syndrome Coronavirus Infection Causes Neuronal Death in the Absence of Encephalitis in Mice Transgenic for Human ACE2." *J virol* 82(2008): 7264-7275.
- Li,Kun, Christine Wohlford-Lenane, Stanley Perlman and Jincun Zhao et al. "Middle East Respiratory Syndrome Coronavirus Causes Multiple Organ Damage and Lethal Disease in Mice Transgenic for Human Dipeptidyl Peptidase 4." *J Infect Dis* 213(2016): 712-722.
- Li, Yan Chao, Wan Zhu Bai and Tsutomu Hashikawa. "The Neuroinvasive Potential of SARS-CoV2 May Play a Role in the Respiratory Failure of COVID-19 Patients." *J Med Virol* 92(2020): 552-555.
- Haeman, Jang, David Boltz, Katharine Sturm-Ramirez and Kennie R Shepherd et al. "Highly Pathogenic H5N1 Influenza Virus Can Enter the Central Nervous System and Induce Neuroinflammation and Neurodegeneration." *Proc Natl Acad Sci USA* 106(2009): 14063.
- Keiland W, Cooper, David H Brann, Michael C Farruggia and Surabhi Bhutani et al. "COVID-19 and the Chemical Senses: Supporting Players Take Center Stage." *Neuron* 107(2020): 219-233
- Klok, FA, M J H A Kruij, van der Meer N J M and Arbous M S et al. "Incidence of Thrombotic Complications in Critically Ill ICU Patients with COVID-19." *Thromb res* 191(2020): 145-147.
- Fei Zhou, Ting Yu, Ronghui Du and Guohui Fan et al. "Clinical Course and Risk Factors for Mortality of Adult Inpatients with COVID-19 in Wuhan, China: A Retrospective Cohort Study." *Lancet* 395(2020): 1054-1062.
- Yan, Zhang, Meng Xiao, Shulan Zhang and Peng Xia et al. "Coagulopathy and Antiphospholipid Antibodies in Patients with Covid-19." *n engl j med* 382(2020): e38.
- Zsuzsanna, Varga, Andreas J Flammer, Peter Steiger and Martina Haberecker et al. "Endothelial Cell Infection and Endotheliitis in COVID-19." *Lancet* 395(2020): 1417-1418
- Tim, Coolen, Valentina Lolli, Niloufar Sadeghi and Antonin Rovai et al. "Early Postmortem Brain MRI Findings in COVID-19 Non-Survivors." *Neurology* 95 (2020).
- Tina, Schaller, Klaus Hirschbühl, Katrin Burkhardt and Georg Braun et al. " Postmortem Examination of Patients With COVID-19." *Jama* 323(2020): 2518-2520.
- Isaac H, Solomon, Erica Normandin, Shamik Bhattacharyya and Shibani S. Mukerji et al. "Neuropathological Features of Covid-19." *N Engl J Med* 383(2020): 989-992.
- Linlin, Bao, Wei Deng, Baoying Huang and Hong Gao et al. "The Pathogenicity of SARS-CoV-2 in hACE2 Transgenic Mice." *Nature* 583(2020): 830-833.
- Luc, Bertrand, Hyung Joon Cho and Michal Toborek. "Blood-Brain Barrier Pericytes as a Target for HIV-1 Infection." *Brain* 142(2019): 502-511.
- Turgay Dalkara, Yasemin Gursoy-Ozdemir and Muge Yemisci. "Brain Microvascular Pericytes in Health and Disease." *Acta neuropathologica* 122(2011): 1-9.
- GTEX, Consortium. "Genetic Effects on Gene Expression Across Human Tissues." *Nature* 550(2017): 204-213.
- David H, Brann, Tatsuya Tsukahara, Caleb Weinreb and Marcela Lipovsek et al. "Non-Neuronal Expression of SARS-CoV-2 Entry Genes in the Olfactory System Suggests Mechanisms Underlying COVID-19-Associated Anosmia." *bioRxiv* (2020).
- Leon, Fodoulian, Joel Tuberosa, Daniel Rossier and Madlaina Boillat et al. "SARS-CoV-2 Receptor and Entry Genes are Expressed by Sustentacular Cells in the Human Olfactory Neuroepithelium." *bioRxiv* (2020).
- Christoph, Muus, Malte D Luecken, Gokcen Eraslan and Avinash Waghray et al. "Integrated Analyses of Single-Cell Atlases Reveal age, Gender, and Smoking Status Associations with Cell Type-Specific Expression of Mediators of SARS-CoV-2 Viral Entry and Highlights Inflammatory Programs in Putative Target Cells." *bioRxiv* (2020).
- Rongrong, Chen, Keer Wang, Jie Yu and Zhong Chen et al. "The Spatial and Cell-Type Distribution of SARS-CoV-2 Receptor ACE2 in Human and Mouse Brain." *bioRxiv* (2020).
- Liuliu, Yang, Yuling Han, Benjamin E Nilsson-Payant and Vikas Gupta et al. "A Human Pluripotent Stem Cell-based Platform to Study SARS-CoV-2 Tropism and Model Virus Infection in Human Cells and Organoids." *Cell stem cell* 125(2020): 136 e127.
- Korin, Bullen, Helena T Hogberg, Asli Bahadirli Talbott and William R. Bishai et al. "Infectability of Human BrainSphere Neurons Suggests Neurotropism of SARS-CoV-2." *Altex* 37(2020).
- John D, Storey, Andrew J Bass, Alan Dabney and David Robinson et al. "Q-value Estimation for False Discovery Rate Control." *Rdrr.io* (2020).
- Steffen, Durinck, Paul T Spellman, Ewan Birney and Wolfgang Huber. "Mapping Identifiers for the Integration of Genomic Datasets with the R/Bioconductor Package BiomaRt." *Nature* 4(2009): 1184-1191.
- Aravind, Subramanian, Pablo Tamayo, Vamsi K Mootha and Sayan Mukherjee et al. "Gene Set Enrichment Analysis: a Knowledge-based Approach for Interpreting Genome-wide Expression Profiles." *PNAS* 102(2005): 15545-15550.

How to cite this article: Lim,Su Bin, Valina Dawson L, Ted Dawson M and Sung-Ung Kang. "ACE2-Expressing Endothelial Cells in Aging Mouse Brain." *J Brain Res* 3 (2020): 116.