

# *Solanum nigrum*: A Medicinal Plant, Its Therapeutic and Biological Scope in Medical Sciences

Iqra Qayyum<sup>1,2\*</sup>

<sup>1</sup>Department of Chemistry, Lahore Garrison University Lahore, Punjab, Pakistan

<sup>2</sup>Department of Chemistry, University of Education, Vehari Campus, Punjab, Pakistan

## Abstract

Immature nations 80% populace of the world depend on conventional medication got from plants for essential human services. In the ongoing decades, ethno-medication has increased critical notoriety, since it is sheltered and has no symptoms. Albeit traditionally accessible manufactured anti-bacterial medications are related with unwanted symptoms and opposition issue, subsequently this examination was completed with the point of investigating the phytochemistry and anti-bacterial movement of concentrates from *Solanum nigrum L* against significant pathogenic microbes. Right now, been accounted for to have intense pharmacological properties like hepatoprotective, anti-ulcerogenic and ulcer recuperating, neuropharmacological, cytoprotective, anti-nociceptive, Anti-fiery and Anti-pyretic activities, etc. The different synthetic constituents like glycoalkaloids, steroidal oligoglycosides, pregnane saponins, non-saponins, glucose, fructose,  $\beta$ -carotene, ascorbic corrosive and protein and numerous others were distinguished right now.

**Keywords:** Anti-ulcerogenic • Steroidal oligoglycosides • Ascorbic acid • Anti-inflammatory

## Introduction

Plants utilized in customary medication speak to an extremely valuable tank of new bioactive atoms. *Solanum nigrum L* is one of the significant plant from customary arrangement of drug discovered everywhere throughout the world. *Solanum nigrum L.*, the entire plant bush, a yearly to fleeting enduring herb having white or mauve blooms pursued by berries, has been accounted for to have intense pharmacological properties like hepatoprotective, anti-ulcerogenic and ulcer recuperating, neuropharmacological, cytoprotective, anti-nociceptive, Anti-provocative and Anti-pyretic activities, etc. [1]. The different concoction constituents like glycoalkaloids, steroidal oligoglycosides, pregnane saponins, non-saponins, glucose, fructose,  $\beta$ -carotene, ascorbic corrosive and protein and numerous others were distinguished in this plant [2].

*Solanum* is one of the biggest and broadly various genera of the family Solanaceae. In Pakistan *Solanum* is portrayed by 15 species, of which 11 species are significant from therapeutic perspective [3]. Systematically, this is a multifaceted family, due to the event of different half breed and disputable ordered status. It can develop in an assortment of soil types like, stony, dry, shallow or profound soils. Various compound constituents are found in *S. nigrum* including glycoalkaloids, for example, tannins, solanine, solasodine, solamargine, solanigrine, steroidal genin (gitogenin) and polyphenolic mixes.

The plant *Solanum nigrum Linn.* has a place with family Solanaceae which is generally known as Makoya or kakamachi. Makoya comprise of dried entire plant bush that develops wild and bounteously in open fields. *Solanum nigrum* is likewise called as dark nightshade which is yearly to fleeting enduring plant has white or mauve blooms pursued by berries that are first green yet change to dark as they age [4].

Immature nations 80% populace of the world depend on customary medication acquired from plants for essential human services. In the ongoing decades, ethno-drug has increased huge notoriety, since it is protected and have no reactions [5]. Albeit routinely accessible engineered anti-bacterial medications are related with unfortunate reactions and opposition issue, along these lines this examination

**\*Address for Correspondence:** Iqra Qayyum, Department of Chemistry, Lahore Garrison University Lahore, Punjab, Pakistan, E-mail: chemistryresearch5@gmail.com

**Copyright:** © 2020 Qayyum I. This is an open-access article distributed under the terms of the creative commons attribution license which permits unrestricted use, distribution and reproduction in any medium, provided the original author and source are credited.

**Received** 06 February, 2020; **Accepted** 11 March, 2020; **Published** 19 March, 2020

was completed with the point of investigating the phytochemistry and anti-bacterial movement of concentrates from *Solanum nigrum L* against significant pathogenic microbes.

## Literature Review

In pharmaceutical enterprises, characteristic crude material particularly plant parts assume a crucial job in assembling of prescriptions and other medication improvement programs [6]. In this challenge, World Health Organization (WHO) is assuming its job to make techniques, rules and principles for the assembling of prescriptions from regular plant materials and furthermore underscores on the significance of conventional drugs [7].

## Phytochemistry

Green unripe organic products contain glycoalkaloids and their eating is a lethal to individual just as domesticated animals that incorporate solamargine (Figure 1), solasonine (Figure 2), solanine (Figure 3),  $\alpha$  and  $\beta$ -solamargine, solasodine, solanidine (0.09-0.65%). The previous two additionally found in leaves. Solanine is found in all pieces of the plants, with the level expanding as the plant develops, however it is clearly changed by soil type and atmosphere.

The all out alkaloid substance of the foods grown from the ground are 0.101 and 0.431 respectively. Ripe natural product contains next to no alkaloids and can be devoured without sick impacts. The little work done on glycoalkaloids, which are said to be liable for anti-cancer movement, demonstrated that solasonine and solamargine, from leaves and unripe natural products, are the two generally significant. All creators detailed that these mixes are available in the best fixations in green (for example unripe) berries, and that the genuine focus can be truly factor and can change as per the phase of plant improvement, just as being influenced by hereditary, occasional, edaphic and natural components. Solasonine fixations are accounted for most elevated during fruiting white solamargine is most noteworthy

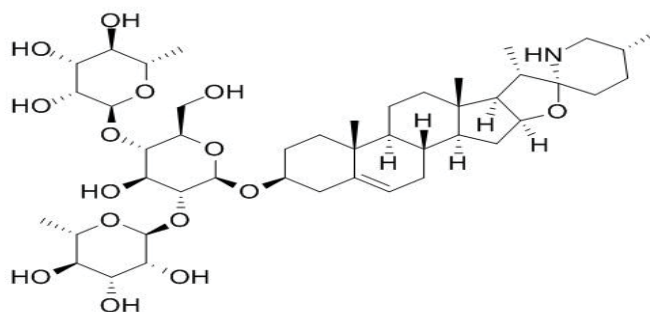


Figure 1. Solamargine.

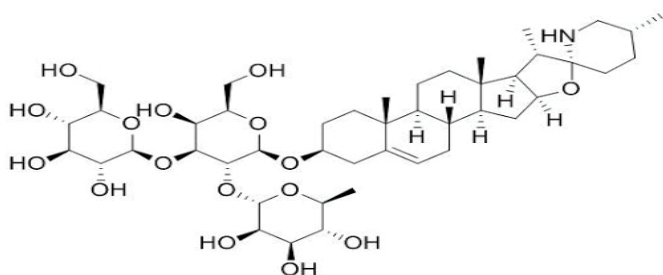


Figure 2. Solasonine.

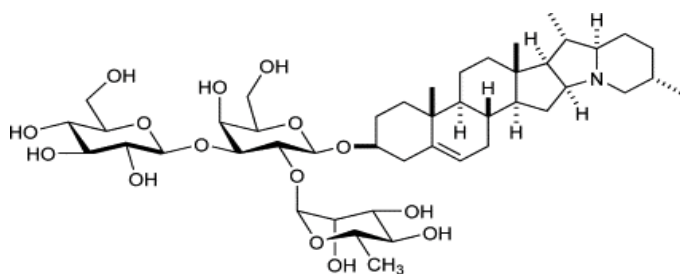


Figure 3. Solanine.

during blossoming.

### Anti-ulcerogenic and ulcer healing activity

Gastric ulcers have numerous etiopathogenesis. Ulcers brought about by pyloric ligation (PL) are because of expanded nearness of corrosive and pepsin in the stomach and harmed by indomethacin are because of diminished prostaglandin (PG) amalgamation which is basic for mucosa [8]. Stresses are because of both physiological and mental variables, which is significant for gastrointestinal barrier and expanded collection of corrosive pepsin prompting auto assimilation of gastric mucosa. *Solanum nigrum* extricate (SNE) demonstrated huge portion subordinate ulcer defensive impact against cold limitation prompted ulcer (CRU) [4], indomethacin (IND) and pyloric ligation (PL) actuated gastric ulcer is for the most part because of increment omeprazole. In CRU, occurrence of ulcer basically because of increment corrosive discharge and age of free radical and so forth the defensive adequacy against CRU might be because of cell reinforcement exercises of SNE and its control on corrosive emission in this manner fortifying the creature's physiological ability to diminish pressure ulcer. Along these lines [9], SNE had the option to deliver huge decrease of gastric mucosal harm initiated by IND, showing likely nearby increment in PG blend [10].

### Anti-oxidant effect

Glycoprotein from *Solanum nigrum* Linn. (SNL-glycoprotein) was disengaged and tried for anti-oxidative consequences for oxygen free radicals utilizing a 1,1-diphenyl-2-picrylhydrazyl (DPPH) assay. The free radical rummaging exercises of the SNL-glycoprotein are ideal in acidic pH and up to 60°C. Be that as it may, it has insignificant exercises within the sight of EDTA, albeit such exercises are not reliant on  $M^{2+}$  particles ( $Ca^{2+}$  and  $Mg^{2+}$ ) within the sight of EDTA. Curiously, when SNL-glycoprotein was treated with deactivating operators (Pronase E and  $NaIO_3$ ), the DPPH radical searching action was diminished as contrasted and SNL-glycoprotein treatment alone. The anti-oxidative impact of SNL-glycoprotein on super oxide anion and hydroxyl radical under ideal conditions uncovered that SNL glycoprotein has striking rummaging impact on the two radicals, yet displayed marginally higher searching impact on super oxide anion created by the enzymatic hypoxanthine/xanthine oxidase framework than on hydroxyl radicals produced by the Fenton response [11]. In any case, SNL-glycoprotein was more impact against hydroxyl radical in cell culture (NIH/3T3). Thusly, 20 microgram/mL SNL-glycoprotein has rummaging capacity superoxide anion relating to that of ascorbic corrosive. Then again, its hydroxyl searching action relates to 0.1 microgram/mL catalase. From these outcomes, we can say that SNL-glycoprotein has strong enemy of oxidative potential [12].

## Extraction Methodology

The plant *Solanum nigrum* L. was gathered and washed altogether under running faucet water and afterward flushed in refined water and permitted to dry for quite a while. At that point the plant was concealing dried with no defilement for around 3 to about a month. The powder was separated. The dried plant was

powdered (coarse) and exposed to Soxhlet apparatus utilizing oil ether, ethyl acetic acid derivation and chloroform individually. Practically all the chlorophyll and lipid is saved on the flagon and was evacuated cautiously. The extraction was finished with every dissolvable until the supernatant in the Soxhlet got straightforward for 36 hours. Each time before taking the solvents of higher extremity to evacuate the hints of past solvents, depleted marc was totally dried. All the concentrates were sifted, dried and gauged. Restorative utilization of *Solanum nigrum* (Nightshade/Makoi).

## Discussion

Restoratively Nightshade/Makoi (h) Kakamachi is quieting, anti-hepatic, malignant growth avoidance specialist and against hyperlipidemic. It is exhibited that out of date people used this as prescription and drug. The herb is diuretic, diaphoretic, anodyne, expectorant elective.

1. *Solanum nigrum* (Makoi (h) Kakamachi) is useful for the treatment of measles.
2. It is useful against heart torment.
3. *Solanum nigrum*/Nightshade is used as a blood purifier.
4. It is valuable in growth of organs like liver and spleen.
5. *Solanum nigrum* is helpful for the treatment of incessant fever.
6. It is used to fix dropsy. It is important for joint aggravation.
7. *Solanum nigrum* (Makoi) has moreover against diarrheal and anti-pyretic property.
8. It moreover used to get deficiency get quality and force, and diuretic in nature.
9. Makoi has strong sedative property.
10. This is useful for the treatment of ulcer.
11. It verifies liver and fights against jaundice.
12. Useful for asthma, hack and oral ulcer, it moreover fixes an ear contamination.
13. It is used as a tonic to improve hunger and for people standing up to an issue with night visual insufficiency.
14. Useful for the treatment of fever and leucoderma.
15. It has been used for treatment of loads and uncleanliness.
16. It is toxic in nature and seen animals, children and people being hurt consequent to eating.
17. *Solanum nigrum* is used as a veterinary medication.
18. It is used against shivering, skin diseases and dermatitis.
19. It lessens gas advancement in the stomach.
20. In America, Africa and various bits of the world, it is used as a sustenance crop anyway protested of harmful quality.
21. The gum is used for the treatment of bronchitis, disturbance, overpowering female discharge and wounds.
22. It has been exhibited important against devours because of it quieting nature.
23. It is useful for the treatment of illness.
24. In Germany, it is used to prompt rest.
25. Leaf juice fixes worm in the stomach and especially supportive for the treatment of gout.
26. Maintains a strategic distance from Jaundice

This is a best preventive prescription for jaundice. Since it invigorates the liver muscles chances of getting jaundice is less. People encountering jaundice can make their eating routine with *Solanum* and can vanish the disease condition. The concentrate orchestrated from leaves and results of dull.

## Fixes spleen diseases

It is a medication for spleen maladies moreover. *Solanum nigrum* has an anti-bacterial movement and consequently it executes the illness causing microorganisms in the body. It battles against the microorganism and attempts to build the insusceptible reaction in the body. It reinforces the spleen muscles and relieves the stomach ulcers [13]. It diminishes the body heat all you need is dark nightshade greens, cumin seeds, turmeric powder, gingelly oil and salt. Warmth the dish with gingelly oil add cumin seeds enable it to broil later include the greens and sear it till it is cook include a tumbler of water with little turmeric powder. Cook it and incorporate this in your eating regimen this will significantly add solidarity to the spleen, liver and recuperate the stomach ulcer [9].

## Fixes ulcer

It is the best prescription for mouth ulcer. Individuals experiencing mouth ulcer can accept it as a customary eating routine and it will mend the stomach ulcer too [14].

## It soothes sore throat

It alleviates a sore throat, the open speakers and the artists ought to incorporate this in their eating regimen.

## Works natural laxative agent

Dark nightshade has normally wealthy in fiber substance and it goes about as a characteristic diuretic operator to avoid obstruction issue.

## Helps digestion

Dark nightshade supplies all the required supplements for the body. On the off chance that it is incorporated every day in the eating regimen it processes the nourishment effectively [4].

## Solution for fever

It *Solanum* contain phosphorus, nutrient A, C and Vit B, iron, calcium and different micronutrients. Individuals experiencing body warmth can eat the cooked dark nightshade leaves to alleviate their body warmth and best solution for skin hypersensitivities as well. Concentrate of *Solanum* can fix the fever and body agony and joint torment brought about by the fever [15].

## Animates kidney function

It is the best herb to animate kidney capacity and it helps the channel the pee from the kidney.

## Helps fast pregnancy

The seeds of *Solanum nigrum* help for quick pregnancy and reinforce and ensure the developing life.

## Fixes skin diseases

Skin bubbles, hypersensitivity, heat bubbles, skin bothering can be restored by applying the *Solanum* remove on the influenced territory [16]. This current green's glue can go about as an outer medication and can be connected to the skin for skin treatment.

## Helps good sleep

The seeds of dark nightshade natural products are air dried and powdered and blended with milk and taken during the night, it incites great rest and alleviates the body tiredness.

## Conclusion

*Solanum nigrum L.* is one of the important plants from traditional system of medicine found all over the world. *Solanum nigrum L.*, the whole plant shrub, an annual to short lived perennial herb having white or mauve flowers followed by berries, has been reported to possess potent pharmacological properties like hepatoprotective, anti-ulcerogenic and ulcer healing, neuropharmacological, cytoprotective, anti-nociceptive, anti-inflammatory and Anti-pyretic activities, etc.

## References

- Rashid, Romana, Ghulam Nabi Hajam, Muzaffer Hussain Wani, and Ashiq Hussain. "Extraction method and isolation of phytoconstituents from the chloroform extract of plant *Solanum Nigrum L.* By Column Chromatography." (2017).
- Eddouks, Mohamed, and Naoufel Ali Zeggwagh. "Plants-derived natural products and drug discovery." *Phytotherapy in the Management of Diabetes and Hypertension 1* (2012): 234.
- Nyeem, Mohammad Abu Bin, A. M. U. Rashid, Meher Nowrose, and Md Abu Hossain. "*Solanum nigrum* (Maku): A review of pharmacological activities and clinical effects." *IJAR 3*, (2017): 12-17.
- Mazher, Mubsher, Nafeesa Zahid Malik, Muhammad Riaz, and Adil Hussain, et al. "Phytochemistry and Antibacterial Assay of Fruit, Leaf and Stem Extracts of *Solanum nigrum L.* in Different Solvent."
- Tai, Chen-Jei, Chien-Kai Wang, Cheng-Jeng Tai, and Yi-Feng Lin, et al. "Aqueous extract of *Solanum nigrum* leaves induces autophagy and enhances cytotoxicity of cisplatin, doxorubicin, docetaxel, and 5-fluorouracil in human colorectal carcinoma cells." *Evidence-Based Complementary and Alternative Medicine* (2013).
- Badami, Shrishailappa, S. A. Manohara Reddy, E. P. Kumar, and P. Vijayan, et al. "Antitumor activity of total alkaloid fraction of *Solanum pseudocapsicum* leaves." *Phytotherapy Research: An International Journal Devoted to Pharmacological and Toxicological Evaluation of Natural Product Derivatives 17*, no. 9 (2003): 1001-1004.
- Yousaf, Zubaida, Zabta Khan Shinwari, and Mir Ajab Khan. "Phenetic analysis of medicinally important species of the genus *Solanum* from Pakistan." *Pakistan Journal of Botany 42*, (2010): 1827-1833.
- Doss, Arnold, Mohammed Mubarak, and Rajesh Dhanabalan. "Antibacterial activity of tannins from the leaves of *Solanum trilobatum Linn.*" *Indian J Sci Technol 2*, (2009): 41-43.
- Lin, Hui-Mei, Hsien-Chun Tseng, Chau-Jong Wang, and Jin-Jin Lin. "Hepatoprotective effects of *Solanum nigrum Linn* extract against CCl<sub>4</sub>-induced oxidative damage in rats." *Chemico-Biological Interactions 171*, (2008): 283-293.
- Jainu, Mallika, and Chennam Srinivasulu Shyamala Devi. "Anti-ulcerogenic and ulcer healing effects of *Solanum nigrum (L.)* on experimental ulcer models: possible mechanism for the inhibition of acid formation." *Journal of Ethnopharmacology 104*, (2006): 156-163.
- Arulmozhi, Vadivel, Mani Krishnaveni, Kandhan Karthishwaran, and Ganesan Dhamodharan, et al. "Antioxidant and anti-hyperlipidemic effect of *Solanum nigrum* fruit extract on the experimental model against chronic ethanol toxicity." *Pharmacognosy Magazine 6*, (2010): 42.
- Jain, Ramya, Anjali Sharma, Sanjay Gupta, and Indira P. Sarethy, et al. "*Solanum nigrum*: Current perspectives on therapeutic properties." *Altern Med Rev 16*, (2011): 78-85.
- Hashem, Mohamed, Saad A. Alamri, Ashia A. Shathan, and Sulaiman A. Alrumman, et al. "Antibacterial behavior of weed plants from aseer, Saudi Arabia and their possible mode of action." *International Journal of Science and Research 4*, (2013): 2490-2499.
- Patel, Sanjay, Nirav Gheewala, Ashok Suthar, and Anand Shah. "In-vitro cytotoxicity activity of *Solanum nigrum* extract against Hela cell line and Vero cell line." *Int J Pharm Pharm Sci 1*, (2009): 38-46.
- Das, Merina Paul, and Selva Kumar. "Preliminary phytochemical analysis of *Illicium verum* and *Wedelia chinensis*." *Int. J. PharmTech.* (2013): 24-29.
- Babalola, Ibrahim T., Esther A. Adelakun, and Sadiq Y. Garba. "Evaluation of antimicrobial activity of crude methanol extract of *Solanum nodiflorum Jacq* (*Solanaceae*)." *Methods 10* (2005): 11.

**How to cite this article:** Iqra Qayyum. "*Solanum nigrum*: A Medicinal Plant, Its Therapeutic and Biological Scope in Medical Sciences." *Med Chem (Los Angeles)* 10 (2020). doi: 10.37421/mccr.2020.10.543