

## Pharmacokinetic Study of Cycloserine in Rat Lung and Blood Tissues

Liping Yan, An Xie, Zhuo Wang, Wenjing Zhang, Yi Huang and Heping Xiao\*

Department of Tuberculosis, Shanghai Pulmonary Hospital, Tongji University School of Medicine, 507 Zhengmin Rd., Shanghai 200433, People's Republic of China

**Corresponding author:** Heping Xiao, Department of Tuberculosis, Shanghai Pulmonary Hospital, Tongji University School of Medicine, 507 Zhengmin Rd., Shanghai 200433, People's Republic of China, Tel: 86-21-65115006; Fax: 86-21-65111298; Email: [xiaoheping\\_sars@163.com](mailto:xiaoheping_sars@163.com)

**Rec date:** Mar 07, 2015; **Acc date:** Mar 30, 2015; **Pub date:** Mar 31, 2015

**Copyright:** © 2015 Yan L, et al. This is an open-access article distributed under the terms of the Creative Commons Attribution License, which permits unrestricted use, distribution, and reproduction in any medium, provided the original author and source are credited.

### Abstract

**Objective:** To investigate the pharmacokinetics of cycloserine in healthy rat blood and lung tissues

**Method:** Healthy rat blood and lung tissues were sampled in vivo by microdialysis sampling technique simultaneously. The concentrations of cycloserine in both blood and lung tissues were measured by high performance liquid chromatography mass spectrometry. All data were analyzed by WinNonlin software

**Results:** The maximum concentration of free cycloserine in blood and lung tissue was  $(10.61 \pm 2.42)$  mg/L and  $1.53 \pm 1.71$  mg/L at 1h and then both continued to decline. After administration the concentrations of free cycloserine in the blood has been higher than the concentrations in lung tissues. The area under the concentration curve (AUC) of free cycloserine was  $33.53 \pm 6.51$  h•mg•L<sup>-1</sup> in blood and  $4.49 \pm 2.08$  h•mg•L<sup>-1</sup> in lung tissues.

**Conclusion:** Microdialysis sampling technique combined with high performance liquid chromatography mass spectrometry / mass spectrometry can be accurately and objectively reflect the drug in the blood and tissues of the pharmacokinetic characteristics of cycloserine. Concentrations in lung tissues were significantly lower than concentrations in blood.

**Keywords:** Cycloserine; Microdialysis; Pharmacokinetics; Pharmacodynamic; High performance liquid chromatography mass spectrometry/mass spectrometry

### Introduction

Tuberculosis (TB) ranks as the second leading cause of death from an infectious disease worldwide [1]. Globally, 3.5% of new and 20.5% of previously treated TB cases was estimated to have Multidrug-resistant TB (MDR-TB). Advances in the fields of therapeutic medicine have had a less than optimal effect and MDR-TB mortality is unacceptably high. Cycloserine is a new second-line anti-tuberculosis drug and mainly used in combination with other drugs for the treatment of MDR-TB. Cycloserine blocks the synthesis of adhesive peptide of bacterial cell wall by inhibiting the function of D- alanine racemase (Alr) and synthetase (Ddl) [2]. Therefore it has strong killing effect against Mycobacterium tuberculosis (MTB) and Nontuberculosis mycobacteria (NTM). Cycloserine also has the characteristics of good capability of penetrating in tissues and light injury to liver. In addition, the resistant rate of MTB to cycloserine is fairly low. Therefore, WHO recommends the regimen containing cycloserine for the treatment of MDR-TB [3,4]. Currently, the concept of the target site concentration as a direct link to therapeutic drug effects and direct target tissue concentration measurements as a means of optimizing individual drug therapy is receiving much attention [5]. Studies on pharmacokinetics of cycloserine in blood and lung tissue can provide reference for clinical medication. Unfortunately, we have not found many relevant reports. To address this need, we conducted this study to investigate the pharmacokinetics of cycloserine in healthy rats blood and lung tissues.

### Materials and Methods

#### Experimental animal

Total six SD male rats of SPF grade with weight 220-250 g were provided by the animal center of Second Military Medical University.

#### Apparatus

Microdialysis equipment was product of Swedish CMA company including microdialysis pump (CMA402), trace collector (CMA820), probe of blood and lung tissues (CMA/20PES) and 1ml syringe. The length and diameter of the dialysis membrane in probe was 10 mm and 0.5 mm. The cut-off of molecular weight was 100000. Spectrometer includes API-3200 LC- MS, AB 3200 MS, Q TRAP and SHIMADZU LC-20AD.

#### Reagent

Cycloserine was purchased from Zhejiang Hisun Pharmaceutical Co. Ltd. Pentobarbital was purchased from Sigma company. Lactate Ringer's solution including sodium lactate, sodium chloride, potassium chloride and calcium chloride was purchased from Guangdong Otsuka Pharmaceutical Co., Ltd.

#### Mass spectrometric conditions

ESI source was the source ion. Positive ion detection was the detection mode. Scanning mode was selected ion multiple reaction monitoring (MRM). Quantitative analysis ion reaction was m/z206.9, m/z105.0 respectively. Ion spray voltage was 4500. Defamily potential (DP) was 25. Entrance potential (EP) and Export potential (CXP) was

4 and 38, respectively. Collision energy (CE) was 20. Source nozzle heating air temperature was 550. Curtain gas (CUR) and Collision gas (CAD) was 25 and medium, respectively. Ion source gas 1 (Gas1) and Ion source gas 2 (Gas2) was 55 and 50, respectively.

### Chromatographic conditions

The chromatographic column was ACE.5C18-AR column (4.6 mm×150 mm, 5 μm). Mobile phase was acetonitrile containing 2 mM ammonium formate and 0.1% aqueous formic acid (v/v)=35:65. Current Speed was 1.0 μl/min. Column temperature and sample chamber temperature was 30 and 4, respectively. The volume of sample was 5 μl.

### Probe recovery determination

We adopt reverse dialysis method. Rats were fixed in 37°C heat insulation pad after anesthetized. The oblique incision was in the gap between the fifth and the sixth rib of the right chest along the rib clearance. From the broken segment of the fifth rib, expose the right lung. Microdialysis probe was implanted into lung tissues towards the direction of the lung hilum along the incision. Fixed and closed the chest. Blood vessels probe was implanted into inferior vena cava via the left femoral vein. Ringer solution was loaded into the probe. The postoperative recovery period was about 2 hours. Ringer containing 1 μg/ml cycloserine was loaded into blood and lung tissue respectively at a constant rate of 2 μl/min. The drug concentration in the perfusion solution (Cperf) and the drug concentration in dialysate (Cdial) were determined by LC-MS-MS. The in vivo recovery of the probe was calculated by the following formula:  $R_{dial} = (C_{perf} - C_{dial}) / C_{perf}$ . The actual concentration of drugs in vivo (Cu) was obtained by the conversion of continuous monitoring income dialysate concentration (Cm) with the formula of  $C_u = C_m / R_{dial}$ .

### Pharmacokinetic analysis

Cycloserine was orally administered to rat with the dosage of 22.5mg/kg body weight. Then we began collecting dialysate samples. Samples were collected once every 15min for the former 240min and once every 30min later, until the end of 480min. Synchronous monitoring drug concentration changes in the rat pulmonary tissue and blood after administration of 480 min.

Pharmacokinetic data analyses were conducted using Phoenix WinNonlin software (Pharsight Corporation, Version 6.1, 2009) with non-compartment model. Calculate the area under the curve (AUC) according to the measured value.  $AUC = AUC(0-t) + AUC(t-t_{last}) = AUC(0-t) + C_{last} / z$ ; The area under the curve of the first order moment (AUMC) =  $AUMC_{last} + (t_{last} \times C_{last} / z) + C_{last} / z^2$ . The mean Resident time (MRT) =  $AUMC / AUC$ . Z was the gradient of tail section of logarithm of drug concentration-time curve. C<sub>last</sub> and t<sub>last</sub> was the final (360min) concentration and time. Blood and lung tissue distribution coefficient of drug was calculated by AUC of lung tissue/AUC of blood. The penetration ratio (PR) of cycloserine to lung tissue was calculated by C of lung tissue/C of blood.

## Results

### Chromatographic conditions of cycloserine

Under the condition of this experiment with no endogenous interfering substances in the dialysate, the shape and resolution of cycloserine was fine. The retention time was 4.6 min.

Cycloserine was weighed accurately and added into ultra-pure water to make a series of solutions. Parallel operated three copies and take 10 μl sampling. Determine and record the peak area by LC-MS-MS. The lowest limit of quantification was 22 μg/ml. A linear regression was performed between cycloserine area(y) and concentration(X). The standard curve obtained:  $y = 353.96839x + 504.17744$  ( $r = 0.99996$ ) (weighting:  $1/x^2$ ). It showed that the concentrations of Cycloserine in the range of 22 ng/ml – 2200 ng/ml in the dialysis fluid had good linearity.

Continuously determine standard solutions of cycloserine in low, medium and high concentration for 6 times. The intraday precision (RSD) and the between day precision (RSD) was less than 3% and less than 4% respectively. Precision and accuracy are in line with the requirements of determination of biological sample.

### Pharmacokinetics of cycloserine

The average recovery rates of blood and lung tissue probe of the six rats were 89.4% and  $86 \pm 5\%$ , respectively. After the samples were collected, all experimental rats were exploratory laparotomy. We did not find obvious pulmonary hemorrhage and abnormal accumulation of fluid. The probes were retained in the lungs for paraffin section to confirm that the site where probe implantation was parenchyma of lung. Parameters of non-compartmental model are detailed in Table 1.

Parameters	Blood	Lung
$t^{1/2}$ (h)	$2 \pm 1.54$	$2 \pm 1.79$
C <sub>max</sub> (mg/L)	$10.61 \pm 2.42$	$1.53 \pm 1.71$
T <sub>max</sub> (h)	$1 \pm 0.69$	$1 \pm 0.58$
AUC <sub>0-inf</sub> (h·mg·L <sup>-1</sup> )	$33.53 \pm 6.51$	$4.492 \pm 2.08$
AUC <sub>0-t</sub> (h·mg·L <sup>-1</sup> )	$33.31 \pm 6.37$	$4.27 \pm 2.02$
MRT (h)	$3.45 \pm 0.66$	$3.83 \pm 0.74$

Note: C<sub>max</sub> and t<sub>max</sub> was the peak concentration of drug in the tissue and the time reach peak concentration. AUC<sub>0-inf</sub> and AUC<sub>0-t</sub> represented the total area under the curve and the area to the end point of observation, respectively. MRT was the average dwell time of the drug molecules in vivo.

**Table 1:** Pharmacokinetic parameters in rats blood and lung after intragastric administration of cycloserine ( $\bar{x} \pm s$ )

The concentrations of free cycloserine in blood and lung tissue reached highest at one hour after oral administration, which was  $10.613 \pm 2.423$  mg/L and  $1.5266 \pm 0.772$  mg/L. And then the concentrations continued to decline. In the monitoring period after administration, concentrations in lung tissue were significantly lower than the concentration in the blood. The area under the concentration-time curve of blood and lung tissue of was  $33.532 \pm 6.595$  h·mg·L<sup>-1</sup> and  $4.492 \pm 1.081$  h·mg·L<sup>-1</sup>. Lung blood barrier permeability was  $0.147 \pm 0.039$  and the highest and lowest value was 0.285 and 0.105. The distribution coefficient of cycloserine in blood

and lung was 0.134. Concentrations in blood and lung tissue of cycloserine after intragastric administration at each time point were shown in Figure 1. Lung blood barrier permeability-time curve was shown in Figure 2.

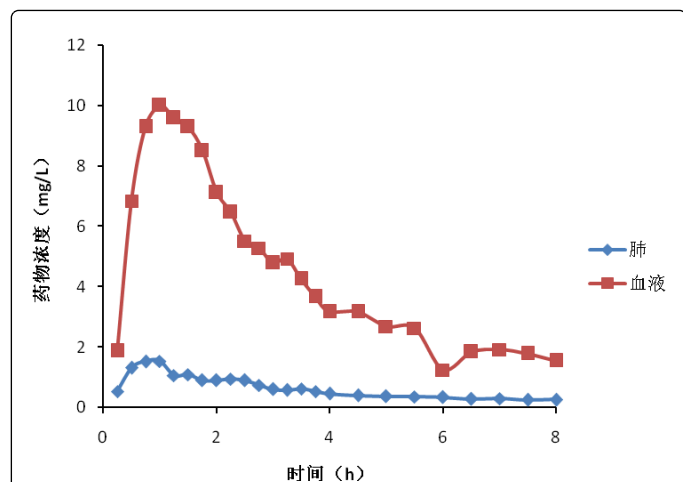


Figure 1: Cycloserine concentration in blood and lung tissues at each sampling

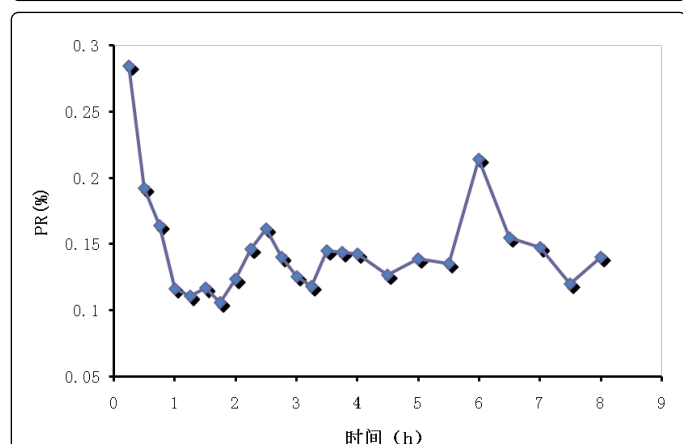


Figure 2: Permeability rate (PR) of lung tissue to blood of cycloserine at all sampling point.

## Discussion

Antibacterial drug pharmacokinetics in local was the most important factor which decides its anti-infection effect. Testing drug concentration in lung tissue traditionally use whole lung tissue homogenate, saliva, respiratory secretions, pleural effusion, epithelial lining fluid especially bronchial alveolar lavage (BAL) fluid sampling [4]. But these methods can not accurately reflect the metabolism of free drug in lung interstitial fluid. Microdialysis is an emerging biological sampling technique, mainly using the principle of semipermeable membrane having permeability to small molecular compounds and material diffusion along a concentration gradient. Protein bound drugs at the testing site is trapped in dialysis membrane outside probe and the detected sample was free drug. Combined with the probe dialysis rate, sampling the material of extracellular fluid

(ECF), can calculate the corresponding drug concentration in extracellular fluid of the target tissue in the same individual at dense time point [6]. Research shows that the microdialysis technique is a safe and effective way of assessing the pharmacokinetics of antimicrobial agents in lung tissue [7]. In vivo, real-time and continuous sampling can be performed without disrupting the normal physiological process. It also has the advantages of small amount of sampling, small interference of organism balance and direct determination of pulmonary free small molecule concentration. These have important significance in the research of drugs.

Sample analysis in this study using High performance liquid chromatography mass spectrometry/mass spectrometry (HPL-MS/MS) method. Compared with the previous simple high performance liquid chromatography, it not only has the liquid separation powerful phase analysis ability, but also has the mass sensitive identification and structure analysis ability. HPLC-MS/MS technology has advantages of detection sample diversity, repeatable quantitative analysis, sufficient sensitivity and selectivity, rapid analysis and convenient. It also can analysis the complex molecular structure of body fluid.

In microdialysis sampling, animal individual differences did not cause significant influence to probe recovery rate. Because the probe used in this experiment was the commercial CMA probe with stable physical property and the selected parts for microdialysis was relatively fixed, the microcirculation transport of drugs in different individuals was similar. The inter-individual differences of measured probe recovery observed is small. In this experiment, the blood and lung probe recoveries were  $89 \pm 4\%$  and  $86 \pm 5\%$ , higher than some of the previous microdialysis study [6,8,9]. The main reason was small molecule of cycloserine easily through the probe semipermeable membrane, so that the recovery rate increased.

In this experiment, we observe the pharmacokinetics of cycloserine in lung tissue administered 250mg every time refer to the minimum dosage for human body. The distribution coefficient from blood to lung tissue was  $0.15 \pm 0.2$  and the penetration rate from blood to lung tissue has been maintained between 0.28 to 0.10, most located at about 0.15. We can see that the penetration rate of cycloserine to lung tissue is poor, probably because cycloserine was small molecular and water soluble substances. We all know that the drug concentration in lung tissue after administration was far lower than the drug concentration in blood (about 1/30 to 1/40 of concentrations in blood) [10]. While drugs with large molecular and lipid soluble could penetrated into lungs more easily. Rifampicin is an example of this type. Most antibacterial drugs have stronger ability of penetrating inflammatory tissues than normal tissues. The experiment is done on healthy rats. Whether the concentration of cycloserine in lung tissue will be higher when pulmonary inflammation or infection exist or if we administered oral dosing of 500mg every time, the penetration rate would be higher? All these need further descriptive studies.

The half-time of cycloserine in human was 10h, while in this study the half-time of cycloserine in rats was 2h. The possible cause was that cycloserine was removed rapidly in rats. Fattorini et al found that cycloserine was eliminated in a higher rate in mice, significantly faster than in human body [11]. In this study,  $C_{max}$  in blood was  $10.61 \pm 2.42$  mg/L. It was seen that concentration of cycloserine in blood serine after oral administration was still high.

The bioavailability of cycloserine in human was relatively high. Absorption rate can reach 70-90% vial oral.  $C_{max}$  in lung tissue was

10.61 ± 2.42 mg/L in this study. In vitro, the minimum inhibitory concentration (MIC) of cycloserine on strain H37Rv was high (25 mg/L) [12]. It is difficult to achieve the desired effect of anti-tuberculosis in the lung tissue. From the view of pharmacodynamics, we suspect that the treatment effect of cycloserine administered 250 mg in oral dosage is limited. Increase the dose was needed. In addition, the clearance rate and the average dwell time of cycloserine in lung tissue and in blood is basically the same which suggest that the elimination process of cycloserine in lung is similar to that in blood.

To kill *Mycobacterium tuberculosis* often requires combined action of multiple medications. So the treatment effect is very difficult to be judged by single effect of medicines. Treatment of multidrug resistant TB needs of long-term use of drugs more than five kinds. This is bound to the existence of the interactions between drugs.

It was found in the study by David et al that beta-chlorine-d-alanine drugs and cycloserine have synergistic effect. The MIC of cycloserine on *Mycobacterium tuberculosis* can be greatly reduced while combined with beta-chlorine-d-alanine drugs [13]. Many other studies showed scheme containing cycloserine had good results in the treatment of MDR-TB. In Turkey, the cure rate of treatment containing cycloserine in MDR-TB was 77% [14]. In Japanese, the curative effect of D-cycloserine, ethambutol and pyrazinamide in pregnant MDR-TB patients is remarkable [15]. In Iran, treatment of cycloserine in MDR-TB can achieve cure [16]. In India, out of 39 MDR-TB patients receiving the regimen containing cycloserine, 29 (74.3%) achieved sputum conversion within six months and remained so at the end of two years [17].

Pharmacokinetic data in this body was obtained in health rats. But in practice, the AUC value in infected body often is not the same as in the healthy body. Therefore, in order to obtain the true cycloserine pharmacokinetics more accurately, we need to study further. For example, obtain kinetic parameters in infectious animals and patients or do experiments on combined administration of multiple antituberculous drugs. Since lack of theory and experience of MDR-TB treatment with cycloserine, we need more laboratory research and clinical practice.

## References

1. [http://www.who.int/tb/publications/global\\_report/2013/en/index.html](http://www.who.int/tb/publications/global_report/2013/en/index.html)
2. Bruning JB, Murillo AC, Chacon O, Barletta RG, Sacchetti JC (2011) Structure of the *Mycobacterium tuberculosis* D-alanine: D-alanine ligase, a target of the antituberculosis drug D-cycloserine. *Antimicrob Agents Chemother* 55: 291-301.
3. Falzon D, Jaramillo E, Schünemann HJ, Arentz M, Bauer M, et al. (2011) WHO guidelines for the programmatic management of drug-resistant tuberculosis: 2011 update. *Eur Respir J* 38: 516-528.
4. Brunner M, Langer O (2006) Microdialysis versus other techniques for the clinical assessment of in vivo tissue drug distribution. *AAPS J* 8: E263-271.
5. Rowland M, Tozer TN (1995) Concentration Monitoring, Clinical Pharmacokinetics: Concepts and Applications. (3rd edn), Williams & Wilkins, Baltimore, USA.
6. Liu D, Xiao H, Wang Z (2010) Pharmacokinetics of levofloxacin hydrochloride in rat pancreas. *Chinese Journal of Traumatology* 10: 93-95.
7. Dhanani J, Roberts JA, Chew M, Lipman J, Boots RJ, et al. (2010) Antimicrobial chemotherapy and lung microdialysis: a review. *Int J Antimicrob Agents* 36: 491-500.
8. Tasso L, Bettoni CC, Oliveira LK, Dalla Costa T (2008) Evaluation of gatifloxacin penetration into skeletal muscle and lung by microdialysis in rats. *Int J Pharm* 358: 96-101.
9. Plock N, Kloft C (2005) Microdialysis-theoretical background and recent implementation in applied life-sciences. *Eur J Pharm Sci* 25: 1-24.
10. Zhang M, Yang J (2000) Pharmacokinetics of antibacterial drugs in lung. *Chinese Journal of rural doctor* 10: 18.
11. Fattorini L, Tan D, Iona E, Mattei M, Giannoni F, et al. (2003) Activities of moxifloxacin alone and in combination with other antimicrobial agents against multidrug-resistant *Mycobacterium tuberculosis* infection in BALB/c mice. *Antimicrob Agents Chemother* 47: 360-362.
12. [No authors listed] (2008) Cycloserine. *Tuberculosis (Edinb)* 88: 100-101.
13. David S1 (2001) Synergic activity of D-cycloserine and beta-chloro-D-alanine against *Mycobacterium tuberculosis*. *J Antimicrob Chemother* 47: 203-206.
14. Tahaoglu K, Törün T, Sevim T, Ataç G, Kir A, et al. (2001) The treatment of multidrug-resistant tuberculosis in Turkey. *N Engl J Med* 345: 170-174.
15. Takashima T, Danno K, Tamura Y, Nagai T, Matsumoto T, et al. (2006) Treatment outcome of patients with multidrug-resistant pulmonary tuberculosis during pregnancy. *Kekkaku* 81: 413-418.
16. Masjedi MR, Tabarsi P, Chitsaz E, Baghaei P, Mirsaedi M, et al. (2008) Outcome of treatment of MDR-TB patients with standardised regimens, Iran, 2002-2006. *Int J Tuberc Lung Dis* 12: 750-755.
17. Prasad R, Verma SK, Sahai S, Kumar S, Jain A (2006) Efficacy and safety of kanamycin, ethionamide, PAS and cycloserine in multidrug-resistant pulmonary tuberculosis patients. *Indian J Chest Dis Allied Sci* 48: 183-186.