

## Old Crystallizing Galactocele - A Rare Case Report

Samoon Nuzhat<sup>1\*</sup>, Shah Qayoom<sup>2</sup>, Qureshi Zubair<sup>1</sup> and Bashir Nusrat<sup>3</sup>

<sup>1</sup>Department of Pathology and Transfusion Medicine District Hospital Baramulla, Jammu and Kashmir, India

<sup>2</sup>Department of Surgery District Hospital Baramulla, Jammu and Kashmir, India

<sup>3</sup>SKIMS Soura, Jammu and Kashmir, India

\*Corresponding author: Nuzhat Samoon, Department of Pathology and Transfusion Medicine, District Hospital Baramulla, Jammu and Kashmir, India, Tel: 9906638617; E-mail: samoon.nuzhat@gmail.com

Rec date: Dec 02, 2014, Acc date: Apr 28, 2015, Pub date: Apr 29, 2015

Copyright: © 2015 Nuzhat S, et al. This is an open-access article distributed under the terms of the Creative Commons Attribution License, which permits unrestricted use, distribution, and reproduction in any medium, provided the original author and source are credited.

### Abstract

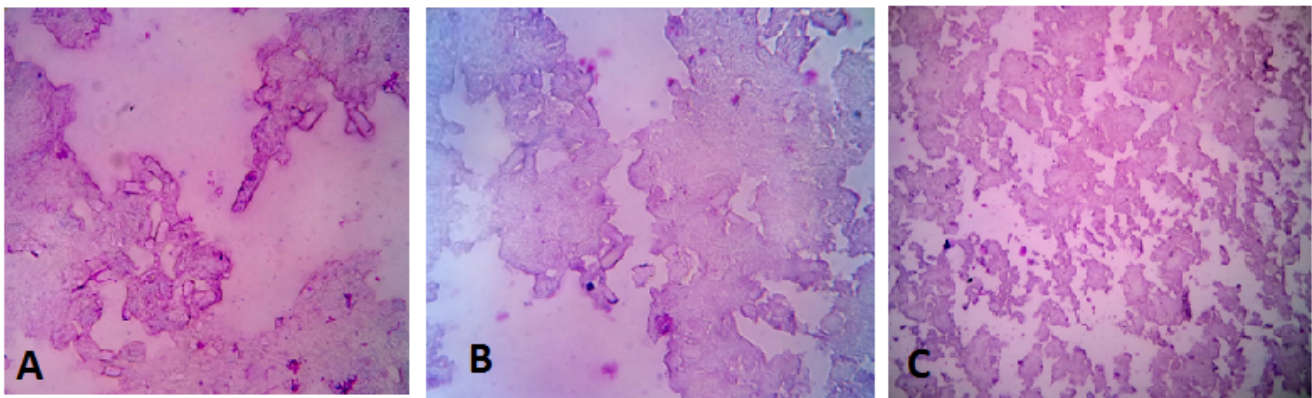
Galactoceles are benign cystic lesions generally occurring during pregnancy and lactation. Fine needle aspiration yields milky fluid that is often both diagnostic and therapeutic. Galactoceles are non-infective due to sterile environment and have no access to the outer environment. Crystallisation of the milky fluid takes place very rarely.

**Keywords:** Breast; Old crystallizing galactocele; Aspiration cytology

### Case

A 35 year old female presented with a 3×3 cm discrete, non-tender nodule involving the lower outer quadrant of left breast since 3 years. FNAC showed birefringent angulated crystals of varying size and shape and amorphous material in MGG (MayGrunWald - Geimsa) (Figures 1A-C). She had delivered a baby boy three years back and had

presented with a swelling breast same site after a period of 6 months. FNA done had revealed features of a galactocele with aspiration of 5 ml of milky fluid with decreased size of the swelling. Now she has presented after 3 years since then with a clinical impression of a fibroadenoma breast. We performed 2 needle passes which resulted in the aspiration of thick chalky white material that obstructed the needle. In view of clinical history and cytology, a diagnosis of a crystallization of a galactocele was made.



**Figure 1:** FNAC showed birefringent angulated crystals of varying size and shape and amorphous material in MGG (MayGrunWald - Geimsa).

The cytological features of a galactocele which are considered to be specific to pregnancy and lactation were assessed by two small series [1] and by three case reports of Raso et al. [2], Nikumbh et al. [3], and Jyothi et al. [4].

### Discussion

A galactocele is an uncommon benign lesion of breast resulting from the obstruction of the duct. In addition to lactation, several breast lesions which result in a ductal obstruction [2] or a generalized condition such as a breast surgery, the transplacental passage of

prolactin, and oral contraceptives can create the factors for the development of a galactocele [1,2].

Unusual feature of a galactocele- crystallizing galactocele makes us to report this case. To the best of our knowledge our case is the fourth case report after Raso et al. [2] and Nikumbh et al. [3], Jyoti et al. [4].

### References

1. Kline TS (1981) Masquerades of malignancy; A review of 4241 aspirates from breast. Acta Cytol 25: 263-266.

- 
2. Raso DS, Greene WB, Silverman JF (1997) Crystallizing galactocele: A case report. *Acta Cytol* 41: 863-70.
  3. Nikumbh DB, Desai SR, Shrigondekar PA, Brahmalkar A, Mane AM (2013) Crystallizing galactocele- An unusual diagnosis on fine needle aspiration cytology. *J Clin Diagn Res* 7: 604-605.
  4. Jyoti K, Baliga V (2015) Crystallising galactocele –a cytological delimita. *Sch J App Med Sci* 3: 129-130.