

Histological Pop Art: A Fascinating Journey through the Human Body

Anne U. Kerber*

Department of Dermatology, Saarland University Medical Center, D-66421 Homburg/Saar, Germany

*Corresponding author: Kerber AU, Department of Dermatology, Saarland University Medical Center, D-66421 Homburg/Saar, Germany, Tel: 004968411623811; E-mail: Anne.Kerber@uks.eu

Received date: February 26, 2018; Accepted date: March 12, 2018; Published date: March 16, 2018

Copyright: © 2018 Kerber AU. This is an open-access article distributed under the terms of the Creative Commons Attribution License, which permits unrestricted use, distribution, and reproduction in any medium, provided the original author and source are credited.

Image Article

Anne Kerber has been working as a medical technical assistant in the field of Dermatopathology in the Department of Dermatology, Venerology and Allergology at the University Hospital of the Saarland for almost twenty-five year. She has always been fascinated by the variety of histological structures of all human organs. For her Histological Pop Art project, she made 3-5 millimetre slides from normal tissues that were stained with H&E and Mallory's trichrome.

Than searched through under the microscope to find photogenic looking structures. Pictures taken by a microscope camera were changed into Pop Art styled pictures by the help of different computer programs. The underlying tissue structures are still clearly visible, but after Pop Art transformation they impress with their extraordinary variety in color and texture (Figures 1-18).

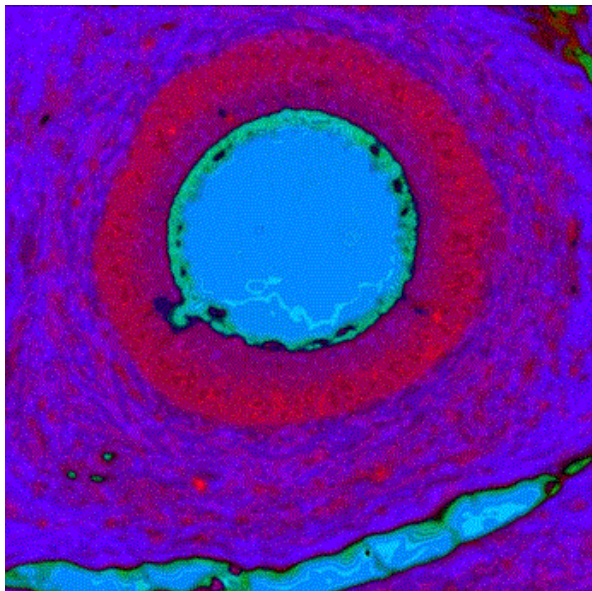


Figure 1: Epididymis.

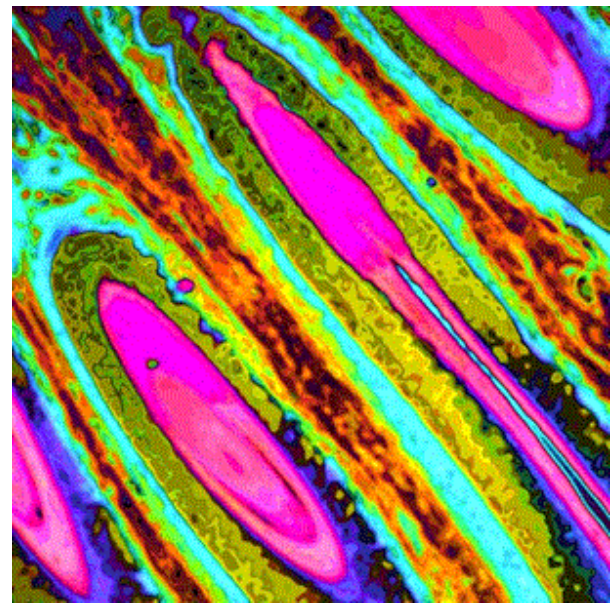


Figure 2: Hair longitudinal section.

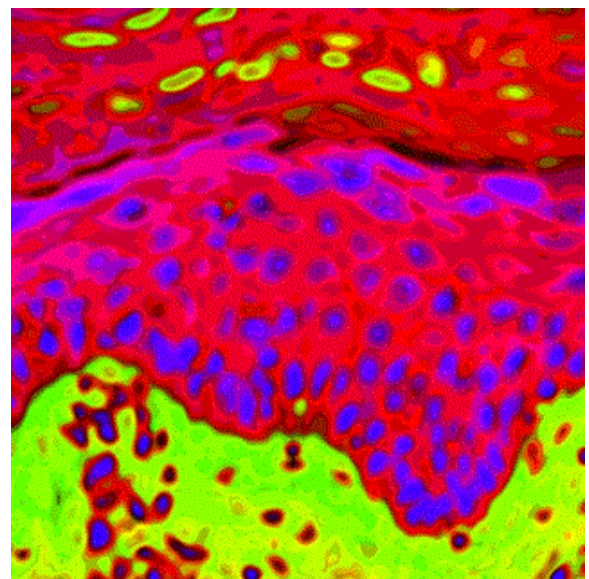


Figure 3: Epidermis.

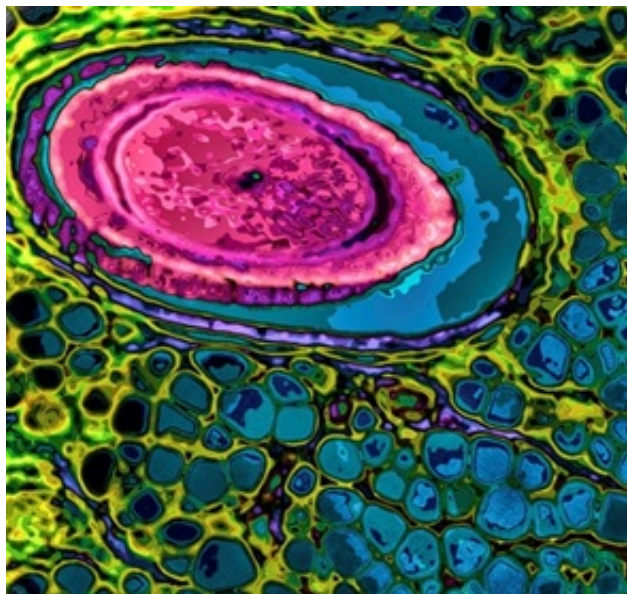


Figure 4: Hair cross section.

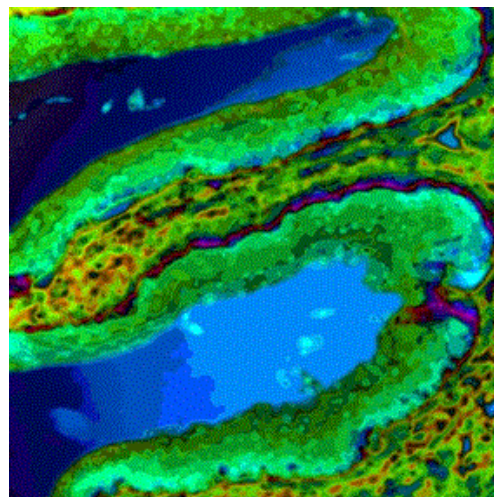


Figure 6: Esophagus.

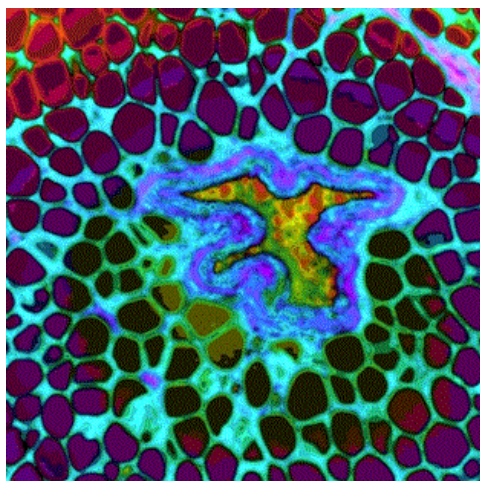


Figure 5: Blood vessel.

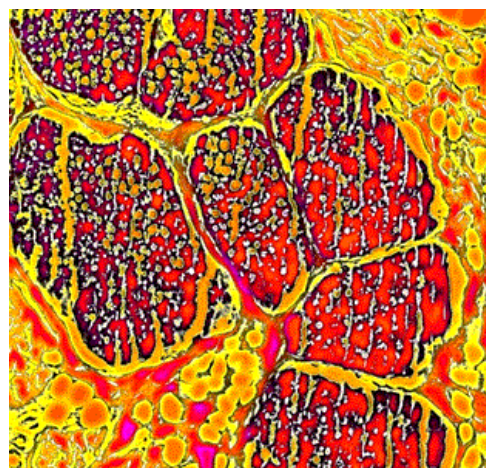


Figure 7: Sebaceous glands.

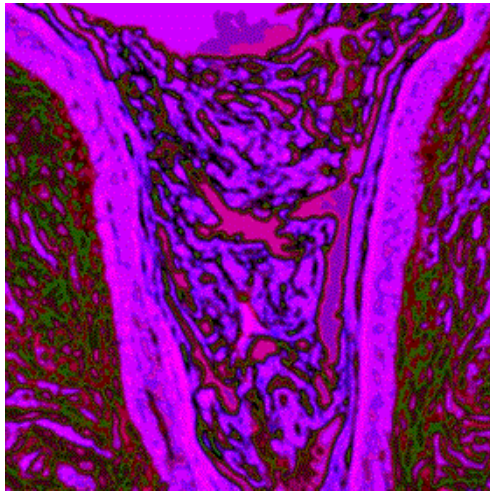


Figure 8: Horny layer.

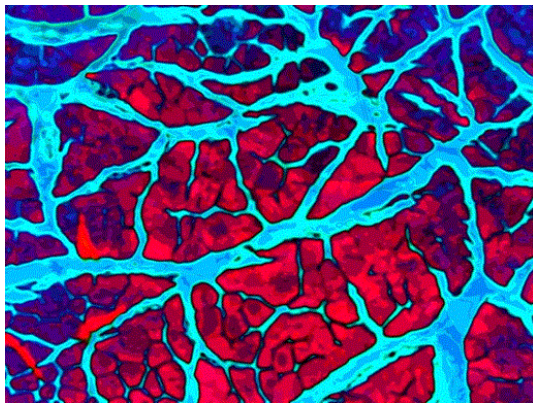


Figure 9: Muscle.

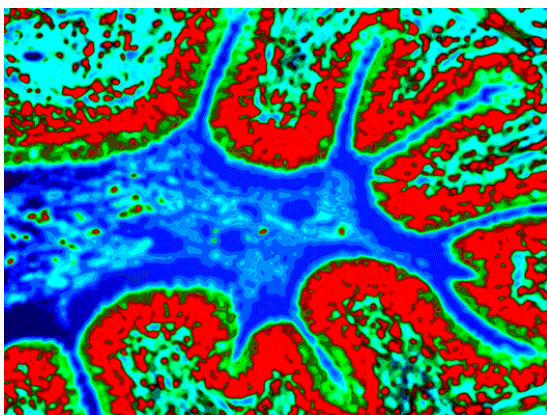


Figure 10: Lung.

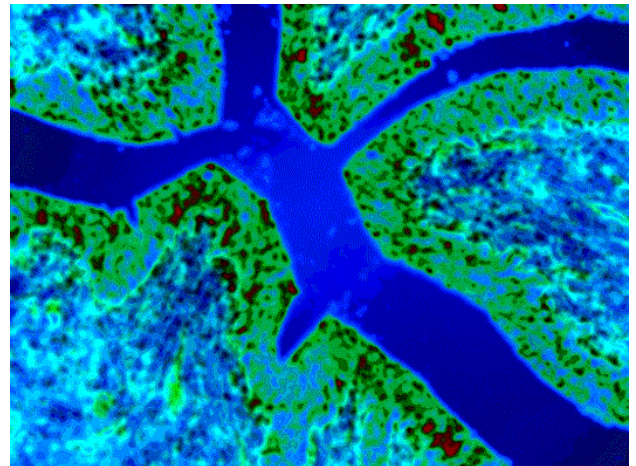


Figure 11: Ureter.

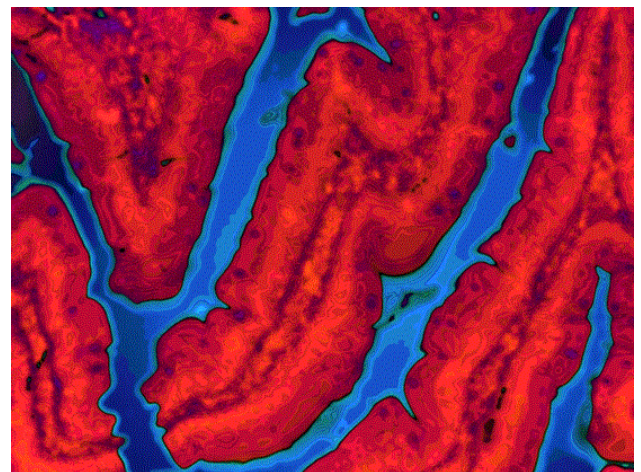


Figure 12: Intestine.

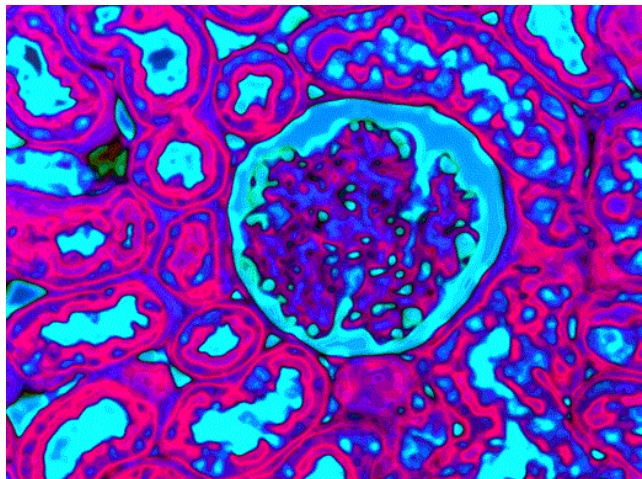


Figure 13: Glomerulum.

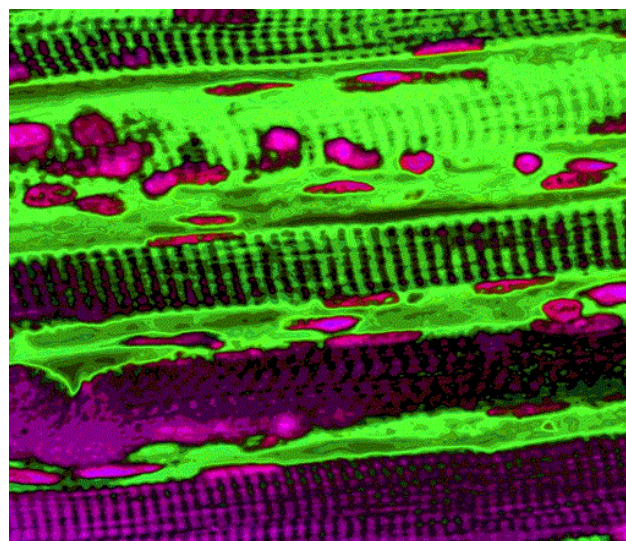


Figure 15: Heart muscle.

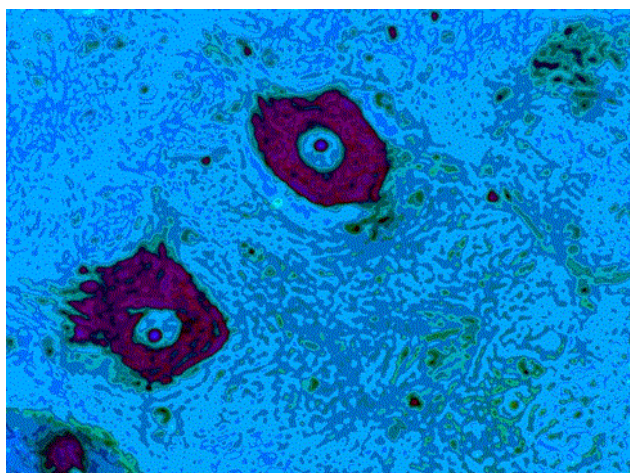


Figure 14: Nerve cells.

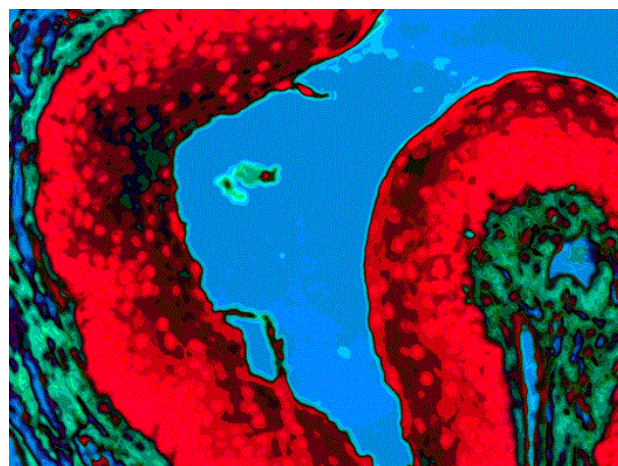


Figure 16: Stomach.

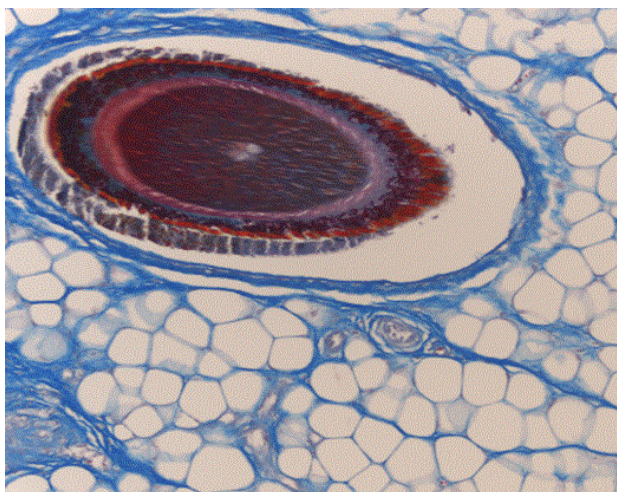


Figure 17: Hair mallory staining.

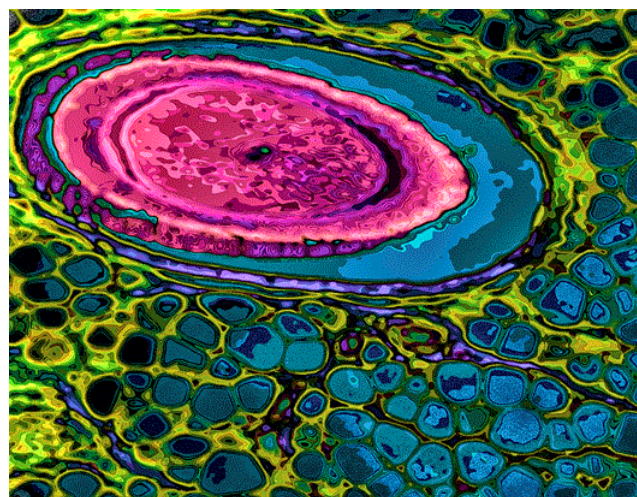


Figure 18: Hair histo pop art style.