

## Difficulty Writing in a Patient with Multiple Sclerosis

Manuel Melo-Bicchi<sup>1\*</sup>, Jason Margolesky<sup>2</sup> and Corneliu Luca<sup>2</sup>

<sup>1</sup>University of Miami, Department of Neurology, Resident Physician

<sup>2</sup>University of Miami, Department of Neurology, Movement Disorder Division

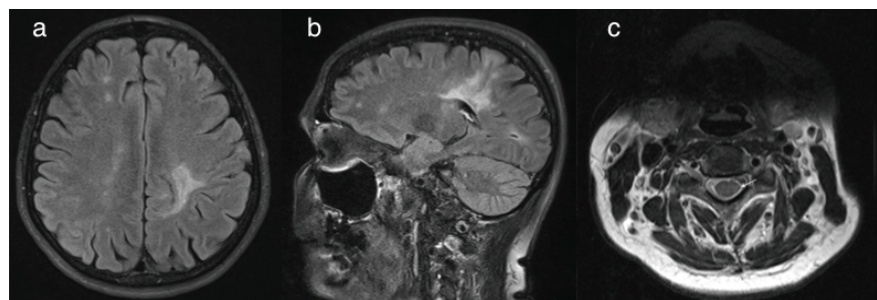
### Difficulty Writing in a Patient with Multiple Sclerosis

We present a 65-year-old right-handed woman with a two-year history of involuntary right-hand movements while writing (Video 1). She denied history of vision loss, weakness or numbness. MRI of her brain and cervical spine are shown in (Figure 1). CSF analysis was suggestive for multiple sclerosis (MS) with five oligoclonal bands and elevated myelin basic protein. Tremor is a frequent finding in patients with MS. Other movement abnormalities are described in about 1.6%

of MS patients [1], including writer's cramp with cervical cord lesions [2]. The contralateral parietal lesion may play a role in our patient.

### References

1. Raja Mehanna, Joseph Jankovic (2013) Movement disorders in multiple sclerosis and other demyelinating diseases. *J Neurol Sci* 328: 1-8.
2. Joong-Seok Kim, Tae-ho Guak, Jae Young Ahn, Yeong-In Kim, Tae-Won Kim, et al. (2007) Writer's cramp as a manifestation of cervical demyelinating lesions. *Eur Neurol* 58: 54-56.



**Figure 1:** MRI brain FLAIR sequences (a and b) with abnormal signal abnormality lesions seen in the left parietal lobe and scattered throughout juxta cortical and subcortical regions. MRI cervical spine (c) T2 sequence at the level C3-C4 showing signal abnormality (arrow) in the left dorsolateral aspect of the spinal cord.

\*Corresponding author: Manuel Melo-Bicchi, University of Miami, Department of Neurology, 1120 NW 14th Street, Ste. 1383 Miami, FL, 33136, US. Tel: 305 243-2742; Fax: 305 243-8108; E-mail: [manuel.melobicchi@jhsmiami.org](mailto:manuel.melobicchi@jhsmiami.org)

Received June 13, 2017; Accepted June 20, 2017; Published June 23, 2017

Citation: Melo-Bicchi M, Margolesky J, Luca C (2017) Difficulty Writing in a Patient with Multiple Sclerosis. *J Neurol Disord* 5: 351. doi:10.4172/2329-6895.1000351

Copyright: © 2017 Melo-Bicchi M, et al. This is an open-access article distributed under the terms of the Creative Commons Attribution License, which permits unrestricted use, distribution, and reproduction in any medium, provided the original author and source are credited.