

Research Article

Open Access

# Deep Sequencing Analysis of the Eha-Regulated Transcriptome of *Edwardsiella tarda* Following Acidification

Gao D<sup>1\*</sup>, Liu N<sup>1</sup>, Li Y<sup>1</sup>, Zhang Y<sup>1</sup>, Liu G<sup>2</sup>, Xiao G<sup>2</sup> and Lu C<sup>2</sup>

<sup>1</sup>Department of Pathogenic Microbiology and Immunology, Southeast University School of Medicine, Nanjing, China

<sup>2</sup>Nanjing Agricultural University, College of Veterinary Medicine, Nanjing, China

## Abstract

Eha is a virulence regulator associated with the replication of *Edwardsiella tarda* within RAW264.7 macrophages. Eha is required for the bacteria to resist the acid and oxidative stress in macrophages. We herein demonstrate that Eha regulates the resistance of this bacterium against acidification in macrophages and explain the underlying molecular mechanism. Firstly, to find an acid or oxidative condition to induce the strongest Eha activities, we constructed pMP220-Pehalac Z plasmid and inspected the lac Z expression regulated by Eha by using a  $\beta$ -galactosidase assay. At exposure of pH6.3 medium 2 h, whole transcriptomic profiling of the wild type and mutant were performed by RNA-sequencing. We identified 147 differentially -expressed genes (DEGs) ( $|\log_2 \text{ratio}| \geq 1$ ), 113 and 34 of which were significantly up- and down-regulated, respectively, in the mutant compared with the wild type. These findings were validated by qRT-PCR. A CO functional analysis revealed that these genes were divided into 25 categories, including the bacterial processing, localization, metabolism, combination, catalysis, transportation and cellular composition. Based on the KEGG database, these genes were distributed in 55 pathways, such as the two-component system, ABC transporters, and microbial metabolism. At last, the intracellular survival rates and intraphagosomal pH of wild type ET 13 and its eha mutant in bafilomycin-treated and untreated macrophages were measured. The experiment showed that Eha was involved in protecting the bacteria from the effects of acidification within macrophages. The survival rate of the wild was also higher than that of the mutant under acid stress both *in vivo* and *in vitro* ( $P < 0.05$ ). Overall, Eha was found to regulate 147 genes that affect bacterial metabolism and virulence, allowing the bacteria to adapt to an acidic environment. These results could be helpful for further investigations of the mechanisms by which *Edwardsiella tarda* survives in macrophages.

**Key words:** Eha gene; *E. tarda*; RNA-seq; Macrophage; Acidification

## Introduction

*Edwardsiella tarda* (*E. tarda*) is a facultative intracellular pathogen that causes edwardsiellosis in freshwater and marine fish worldwide and a Salmonella-like gastroenteritis in humans [1,2]. Macrophages play critical roles in the defense against invading bacteria. Zhang et al. showed that *E. tarda* can utilize macrophages as a niche to initiate its virulence and spread systemic infections [3]. However, there are various stressful conditions such as nutrition deprivation, low pH and high reactive oxygen species (ROS) present in the intracellular niche of the phagocytes [4]. There are the strategies that virulent bacterial strains use to evade phagosomes and escape into the cytosol to enable their survival in the cells [5]. *E. tarda* could live and multiply in macrophages, and escape from the cells. It is important for the bacterium to lead to extra intestinal diseases and systemic infections [6]. *E. tarda* is capable to detoxify ROS by generating catalase (Kat) and superoxide dismutase (Sod) to survive within macrophages [7,8]. Okuda et al. suggested that the bacterial type III secretion system is able to interfere with the formation of acid stress in phagosomes to facilitate its replication in macrophages [9]. However, little other information is available about how *E. tarda* is affected by an acidic environment.

Some findings have been reported about the changes that occur in other intracellular pathogens in response to acid stress in macrophages. For example, Rathman et al. suggested that an acidic environment in Salmonella-containing phagosomes is necessary for the bacterial survival and replication within the macrophage [10]. Supporting this finding, it has been shown that some virulence genes in Salmonella typhimurium are activated within acidified phagosomes [11]. It has also been reported that the VirB secretion apparatus in Brucella is a kind of type IV secretion system. The acidification arising from phagosomes is a key intracellular signal that induces virB expression [12].

In response to stresses in host cells, several transcriptional regulators described in *E. tarda* can activate a series of interacting signaling networks [13]. Our previous study found that Eha is a transcriptional regulator of the MarR family [14]. Eha could also regulate the mRNA levels of some surface structures like the type III secretion system to affect the intracellular survival and virulence of *E. tarda* [15]. We found that Eha is required for the bacteria to resist oxidative stress and survive in macrophages [16]. As the type III secretion system in *E. tarda* disturbs the formation of the acidic environment in phagosomes [9], we hypothesized that Eha may be required for the bacteria to resist the acid stress in macrophages.

Next generation sequencing technology, RNA-Sequencing (RNA-seq), has been used in bacterial transcriptome analyses [17]. We performed a high-throughput RNA-seq study, which has firstly been applied in the transcriptome analyses of *E. tarda*, to detect and compare the differentially-expressed genes (DEGs) between the ET13 wild type bacterium and its eha mutant following exposure to acid stress. Our present study provides the gene expression profiles and sheds light on the molecular mechanism by which *E. tarda* survival is regulated by Eha under acid stress conditions.

**\*Corresponding author:** Daqing G, Department of Pathogenic Microbiology and Immunology, Southeast University School of Medicine, Nanjing, China, Tel: 086-025-83272506; E-mail: dgao2@seu.edu.cn

**Received** September 05, 2017; **Accepted** September 26, 2017; **Published** September 30, 2017

**Citation:** Gao D, Liu N, Li Y, Zhang Y, Liu G, et al. (2017) Deep Sequencing Analysis of the Eha-Regulated Transcriptome of *Edwardsiella tarda* Following Acidification. Metabolomics (Los Angel) 7: 196. doi:10.4172/2153-0769.1000196

**Copyright:** © 2017 Gao D, et al. This is an open-access article distributed under the terms of the Creative Commons Attribution License, which permits unrestricted use, distribution, and reproduction in any medium, provided the original author and source are credited.

## Materials and Methods

### Bacterial strains, plasmids, growth conditions and cell culture

The ET13 wild type strain of *E. tarda* was provided by Dr. Janda [18] (California Department of Health Services Microbial Diseases Laboratory). The eha mutant strain and the complemented strain, ehaComp were constructed previously [14]. The pMP220 plasmid [19] was kindly provided by Prof. Mao (Department of Biochemistry, Southeast University). The eha gene was deleted from ET13 using the pHM5 suicide plasmid with homologous recombination to get the eha mutant strain. The complemented strain, ehaComp (the eha mutant containing plasmid pACYC184-eha), was constructed previously [14]. The pMP220-lac Z plasmid was kindly provided by Prof. Mao (Department of Biochemistry, Southeast University). Bacteria were grown in Luria-Bertani (LB) broth (Sunshine Biotechnology, Nanjing, China).

Murine RAW264.7 macrophages were obtained from Research Institute of Beijing Chuanglian North Carolina Biotechnology (Shanghai, China) and cultivated at 37°C in a 5% CO<sub>2</sub> incubator. The cell medium was Dulbecco's minimal essential medium (DMEM) (Gibco, Shanghai, China) containing 10% fetal calf serum (FCS) (Gibco, Shanghai, China).

### Bacterial survival and replication in bafilomycin-treated macrophages

The assay was performed according to the method reported by Gao [16]. Briefly, RAW264.7 macrophages were seeded at approximately 5.0 × 10<sup>5</sup> cells per well in 24-well tissue culture plates and incubated overnight. The cells in experimental groups were pretreated with 1 μM bafilomycin (BAF) A1 for 30 min, and the cells in the control groups were cultured without the inhibitor. Then the cells were infected for 1 h with the mid-log wild-type or mutant bacteria at a multiplicity of infection (MOI) of 10:1. The cells were incubated in DMEM medium containing gentamicin (100 μg/ml) for 1 h to kill the exocellular bacteria. After designated time intervals (2, 4, 6 h) post-infection, the macrophages were lysed with 1% Triton X-100 for 10 min, then the solutes were diluted, spread onto LB agar plates, and the plates were incubated at 37°C overnight. The numbers of the colony-forming units (cfu) per milliliter of viable intracellular bacteria on the plates were counted.

### Measurement of the intraphagosomal pH in *E. tarda*-containing macrophages

The phagosome acidification assay was performed according to the manufacturer's instructions (SunShineBio, Nanjing, China) and was modified as described previously [20]. First, RAW264.7 cells were incubated with the mid-log wild-type or mutant bacteria at a multiplicity of infection (MOI) of 10:1. These were then labeled with FITC (SunShineBio, Nanjin, China) (pH-sensitive) and iFluorTM647 (AAT Bioquest, USA) (pH-insensitive) fluorescent dyes for 2 h. The cells were washed twice and permeabilized in ice-cold Dulbecco's phosphate- buffered saline at a fixed pH (ranging from 3 to 8) in buffers comprising (DPBS)/ ethylenediaminetetraacetic acid containing 0.05% Triton X-100 in order to calculate the pH of *E. tarda*-containing vacuoles. The samples were immediately analyzed by flow cytometry to determine the ratio of the mean fluorescence intensity (MFI) of the emission between FITC and iFluorTM Fluor 647. A standard curve was made on the basis of the MFI for different pH in the phagosomes. Second, the cells in experimental groups were pretreated with 1 μM bafilomycin (BAF) A1 for 30 min, while the cells in the control groups

were cultured without the inhibitor. After the cells were infected by the bacteria and labeled with the fluorescent dyes, they were washed twice in DPBS buffer without Triton X-100. The values were compared with the standard curve generated from the cells that had phagocytosed *E. tarda* for different time periods (2 h, 4 h, 6 h) before the flow cytometry analysis.

### Recombinant plasmid construction and bacterial electrotransformation

The forward primer: CAGATCTAATGGGTGAACACGCAAAAT and reverse primer: CTCTAGAATCCATAACCCCGATACACC were used to amplify a 358bp fragment from ET13 modified using BglII and XbaI. To construct the pMPE (pMP220-PehalacZ) plasmid, the 358bp eha promoter was inserted into pMP220-LacZ at BglII and XbaI sites. Inserted fragments from the pMPE plasmid were sent to the Sunshine Biotechnology Company for sequencing (Sunshine Biotechnology, Nanjing, China).

The pMPE plasmid was introduced into the eha mutant by electrotransformation [21]. Oxytetracycline plates (50 μg/ml) were used to screen for transformants (EHAMPE).

### β-Galactosidase assay

The β-galactosidase assay was performed according to the product instructions (Sigma, Shanghai, China) and was modified as described by Sun [22]. The first modification place was that the β-galactosidase standard curve was made on the basis of the concentration of a β-galactosidase standard (pg/ml) and the absorbance at 420 nm. Second, after the EHAMPE transformants were cultured in LB (pH=7.2) to an OD600 of 0.8, the bacteria were treated with LB (pH=6) for different periods of time (0, 1, 2, 3, 4 h), or at different pH (7.2, 6.7, 6.3, 5.9, 5.5, 5.1, 4.8, 4.3, 3.9) LB for 2 h, or the bacteria were treated with 0.5% H<sub>2</sub>O<sub>2</sub> of LB for different periods of time (0, 2, 4, 6 h), or at different concentrations (0.05%, 0.1%, 0.5%, 1%, 2%, 4%, 8%) H<sub>2</sub>O<sub>2</sub> of LB for 2 h.

### Bacterial growth, RNA isolation and mRNA enrichment

After the wild type ET13 and its eha mutant were cultured in LB (pH=7.2) to an OD600 of 0.8 at 37°C, these bacteria were treated with LB (pH=6.3) for 2 h. Total RNA was isolated from the bacteria using a RNA extraction kit (TaKaRa company, Dalian, China). The purity, integrity and RIN (RNA Integrity Number) of the RNA were assessed using an Agilent Bioanalyzer. The bacterial mRNA was enriched by the removal of 16S and 23S rRNA from the total RNA by poly-Toligo- attached magnetic beads using a Microb Express Bacterial mRNA Enrichment Kit (Ambion, Shanghai, China).

### cDNA library construction and sequencing using the Illumina genome analyzer

Complementary DNA (cDNA) libraries were built as described previously [23]. Briefly, the mRNA in each sample was fragmented into short sequences with divalent cations by heating in a proprietary buffer. Using the short fragments as templates, the first-strand cDNA was synthesized with random hexamer primers and reverse transcriptase (Invitrogen, Shanghai, China). The second-strand DNA was synthesized using RNase H and DNA polymerase I (Invitrogen, Shanghai, China). The amplified fragments were purified with a Qia Quick PCR Purification kit (Qiagen, Hilden, Germany), and poly (A) was added using Illumina PCR Primer Cocktail in a 35-cycle PCR. Two samples were sent to Shenzhen Hua Da Gene Company and sequenced using the Illumina sequencing 2000 platform. All sequences were

examined for possible sequencing errors. Clean reads were obtained by removing the raw reads containing adapter, poly-N, and any low-quality results. The RNA-seq data have been deposited in the National Center for Biotechnology Information-Sequence Read Archive under accession number SRX1898774.

RNA-seq alignment and identification of the eha-dependent genes altered by acid stress

The clean reads were mapped onto the genome sequences of *E. tarda* ATCC15947 (<http://www.ncbi.nlm.nih.gov/nucleotide/>) to reflect the distribution and coverage of the reads in the reference genome using the Short Oligonucleotide Analysis Package (SOAP). The gene expression of the two samples (wild type ET13 and its eha mutant) was quantified using the Reads Per Kilobase of coding sequence per Million reads (RPKM) algorithm. The genes were considered to be differentially expressed if the difference in RPKM values between the two samples was  $\geq 2.0$ -fold and the p-value was  $<0.005$ . The p-value was adjusted by the false discovery rate (FDR).

The Gene Ontology (GO) is an international standardized gene function classification system that is widely used to classify orthologous proteins. GO annotations for all possible eha-dependent genes were obtained from the GO database (<http://www.geneontology.org/>). The Kyoto Encyclopedia of Genes and Genomes (KEGG) is the major public pathway-related database that is used to identify significantly enriched metabolic pathways or signal transduction pathways (<http://www.genome.jp/kegg/>).

qRT-PCR

The wild type ET13 and its eha mutant were cultured in the condition just like preparing RNA-seq. Total RNA was isolated from the bacteria using a RNA extraction kit (TaKaRa company, Dalian, China). The primers shown in Table 1 were used for quantitative real-time PCR (qRT-PCR). Using a SYBR ExScript qRT-PCR kit (Takara, Dalian, China), qRT-PCR was performed in an ABI 7300 real-time detection system (Applied Biosystems Company, USA). Bacterial 16S rRNA was used as a control. The  $2^{-\Delta\Delta CT}$  method [24] was used to compare the mRNA levels in wild type and mutant bacteria.

Statistical analysis

Probability (P) values were determined by Student's t-test, and analyses were performed using the GraphPad Prism (version 6) software. The P values were considered to be significant when they were  $<0.05$ . The data for qRT-PCR were analyzed statistically by using two-tailed t-tests. Pearson's correlation was used to evaluate the relationship between the results of qRT-PCR and RNA-seq, and was determined using SPSS. The difference was considered to be strong and significant when the correlation coefficient was  $>0.75$ ; a moderate correlation was considered to be present when the coefficient was  $<0.75$  and  $>0.45$ .

Results

Identification of the conditions leading to the highest Eha activities in EHA<sub>MPE</sub> transformants

To determine under what conditions the EHAMPE expresses the strongest Eha activities, we examined the  $\beta$ -galactosidase activity (regulated by Eha) of these EHAMPE transformants. Our results showed that the highest  $\beta$ -galactosidase activity was observed after 2 h exposure, when the transformants treated with LB (pH=6.0) for different time (Figure 1A). Our results also found that the highest  $\beta$ -galactosidase activity was present at pH=6.3 after 2 h exposure

Gene Name	Primer Sequence (5'→3')	Product (bp)	Annealing T (°C)
Up-regulated			
ETATCC_RS01560	GCCAGCACAGGTGATCTCGG CGAGGATACGGACATGAGCC	134	59.50
ETATCC_RS01555	TGGAGCCATTATCACTTTCC CGATCTGCGCTAATACCTCC	154	57.45
ETATCC_RS05005	TGGGCGTCGGTGCCTTCTTC GCCATCGCCAACAGGAATAG	166	57.55
ETATCC_RS11570	CTATCGCCAAACCCATTACC TCGTACCCGACTACAAACCA	141	55.40
ETATCC_RS13205	TTCCTGCGGCACAGTTGAA GGCATTGGCTGATTGGTTG	190	58.00
ETATCC_RS14200	TCTTCCAGCAGGGATTCCG GCTGGTCTTGGCTACCGTCA	147	59.50
ETATCC_RS11220	GGTGGACGAGGCGTTCCTT CAATAGCGGCAGCGACAGC	172	62.00
ETATCC_RS10525	CATTGGTGCGCCTGGAAGA ACACGCCGATGGTGAACGT	168	60.00
ETATCC_RS09485	TGGCGTAGTGCAAGAACA TACGGCATGGATGCTGACC	155	58.00
ETATCC_RS14205	GCCATCTGGATCGGTAACCT CATCTCTGCACATTGACGT	168	55.40
Down-regulated			
ETATCC_RS16120	TAGCTGATCCAGCGTCCTG GCGTTTGAAGCCGTTAGAG	145	58.00
ETATCC_RS06155	ACTTTGCGGTGTTTGTGCG GCAGGGTTGAACAGCAGGA	124	58.00
ETATCC_RS11420	TTGGATCTGGAGAAGGGTG CTGCAATGTTGTCGAGGAGT	142	58.00
ETATCC_RS00925	TGACCGTGCCTGGTAATCC GCGGCTGTAGTGCTTCTGG	186	60.00
ETATCC_RS10185	AACTTGGTCGGTTGGGATG GCTGTGACGGGAGTTAGGC	120	59.45

Table 1: The primer sequences, product sizes and annealing temperatures for RT-qPCR.

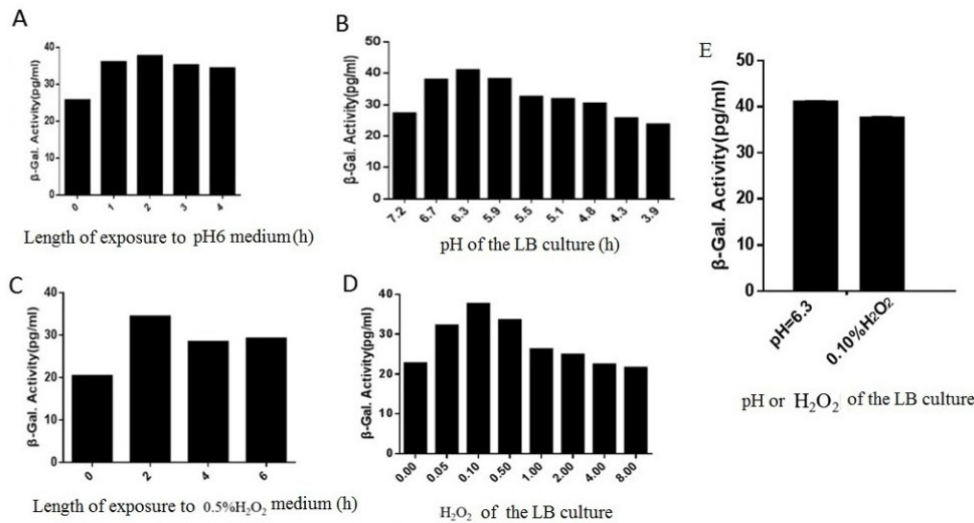
(Figure 1B), when the transformants treated with different pH of LB. At the same time, our results showed that the highest  $\beta$ -galactosidase activity was observed after for 2 h exposure, when the transformants treated with 0.5% H<sub>2</sub>O<sub>2</sub> of LB for different time (Figure 1C). Our results also found that the highest  $\beta$ -galactosidase activity was present to 0.1% H<sub>2</sub>O<sub>2</sub> of LB after 2 h exposure, when the transformants treated with different concentration of H<sub>2</sub>O<sub>2</sub> of LB (Figure 1D). Finally, we decided to select the condition was LB (pH=6.3) for 2 h (Figure 1E).

Evaluation of the transcriptomes of the wild type and eta mutant bacteria

The RNA concentrations isolated from wild type ET13 and its eha mutant were 1.905 and 1.255  $\mu\text{g}/\mu\text{l}$ , respectively. Their purities were OD260/OD280  $\geq 1.9$  and OD260/OD230  $\geq 2.0$ , RIN:10.0. The two kinds of RNA were considered to be of sufficient quality to construct a cDNA library (Table 1S).

Illumina sequencing of the wild type and mutant bacteria cultured under acid stress generated raw reads per library, respectively. After filtration to remove the low-quality reads, a total of 12,233,396 (wild type) and 12,122,800 (mutant) clean reads were separately obtained from the raw reads of the two samples. More than 94% of the clean reads of 11501727 (94.02%) for wild type and 11443179 (94.39%) for mutant completely matched the reference genome of *E. tarda* ATCC15947. Among the clean reads, there were 7233093 (59.13%; wild type) and 6313604 (51.48%; mutant) perfect matches, and 4268634 (34.89%; wild type) and (34.91%; mutant) had a  $\leq 5$  bp mismatch (Table 2S).





**Figure 1:** The  $\beta$ -galactosidase activities of EHAMPE transformants in different cultural conditions. The  $\beta$ -galactosidase activities of the *eha* mutant strains carry plasmid pMPE (pMP220-PehalacZ) have been tested. The plasmids encode either *eha* gene promoter or *lacZ* gene. The transformant strains were treated with LB (pH=6) for various length of time (0, 1, 2, 3, 4 h) (A), or with LB at different pH (7.2, 6.7, 6.3, 5.9, 5.5, 5.1, 4.8, 4.3, 3.9) for 2 h (B), or with 0.5%  $H_2O_2$  concentration of LB for different periods of time (0, 2, 4, 6 h) (C), or at different concentrations (0.05%, 0.1%, 0.5%, 1%, 1%, 2%, 4%, 8%)  $H_2O_2$  of LB for 2 h (D). The  $\beta$ -galactosidase activities of the transformant strains treated with LB (pH=6) were compared with those with LB (0.1%  $H_2O_2$ ) (E). The error bars represented the SD of three parallel experiments.

It is important to annotate sequences, because it can reveal the molecular mechanisms underlying changes in gene expression. Using the SOAP software to assess the randomness and coverage of the clean reads mapped to the reference genome, our results showed that different sizes of clean reads were well-distributed in the reference genome (Figure 1S) and the degree of coverage for more than 90% of the clean reads exceeded 92% of the reference genome (Figure 2S).

Functional classification of the *eha*-dependent genes

We quantified the transcriptional activity of the genes using the RPKM algorithm. By comparing the expression levels of the *eha* mutant with the wild type bacteria, we found that 147 genes were significantly differentially transcribed between the two samples under acid stress ( $|\log_2 \text{ratio}| \geq 1$ ,  $FDR \leq 0.001$ , and  $q \text{ value} < 0.005$ ). Among these genes, 113 were up-regulated and 34 were down-regulated in the *eha* mutant, compared with the wild type.

Functional assignments were defined by Gene GO terms, which provided a broad functional classification of the genes and their products. A GO category analysis revealed that 126 among the 147 genes were classified into 25 functional categories. These genes were mainly involved in binding (59 genes), catalytic activity (83 genes), cell components (37 genes), cell membranes (33 genes), cellular processes (68 genes), localization (30 genes), metabolism (78 genes), and transport (27 genes) (Figure 2). These were considered to be genes that were transcribed in an *eha*-dependent manner in response to acid stress.

Pathway analysis of the *eha*-dependent genes

To further investigate the biological functions and interactions of these genes, a pathway-based analysis was conducted using the KEGG pathway database, which contains all known networks of molecular interactions in different species. The KEGG analysis showed that 130 of the 147 total DEGs were associated with 55 pathways, including amino acid metabolism (10 pathways); carbohydrate, lipid and energy

Sample	concentration (ng/μl)	OD <sub>260/280</sub>	OD <sub>260/230</sub>	RIN	23S/16S
wild type	1905	2.03	2.33	10	1.3
eha mutant	1255	1.99	2.29	10	1.2

Table 1S: The RNA qualities of the wild type and *eha* mutant ET13.

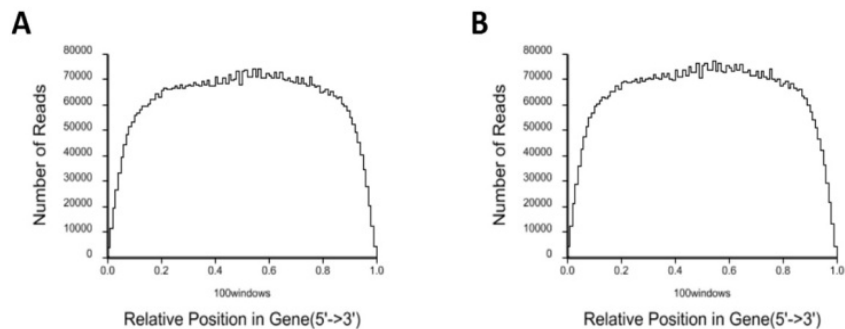
	Wild type ET13	eha mutant ET13
Total Reads	12233396 (100.00%)	12122800 (100.00%)
Total Base Pairs	1101005640 (100.00%)	1091052000 (100.00%)
Total Mapped Reads	11501727 (94.02%)	11443179 (94.39%)
Perfect match	7233093 (59.13%)	7210872 (59.48%)
≤5 bp mismatch	4268634 (34.89%)	4232307 (34.91%)

Table 2S: The numbers (percentages) of clean reads for the wild type and *eha* mutant ET13 from Map to Genome.

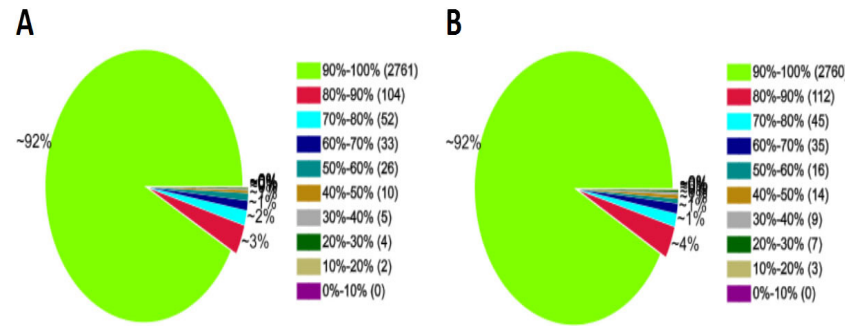
metabolism (16 pathways); nucleotide metabolism (four pathways); sulfur metabolism (three pathways); nitrogen metabolism; iron transport and so on. The pathway analysis may help to understand the interactions among these genes. The metabolic pathways of the DEGs were involved in two-component systems (20 genes), ABC transporters (12 genes), microbial metabolism in diverse environments (21 genes), biosynthesis of secondary metabolites (17 genes) and flagellar assembly (3 genes) (Table 2).

Validation of RNA-seq analysis by qRT-PCR

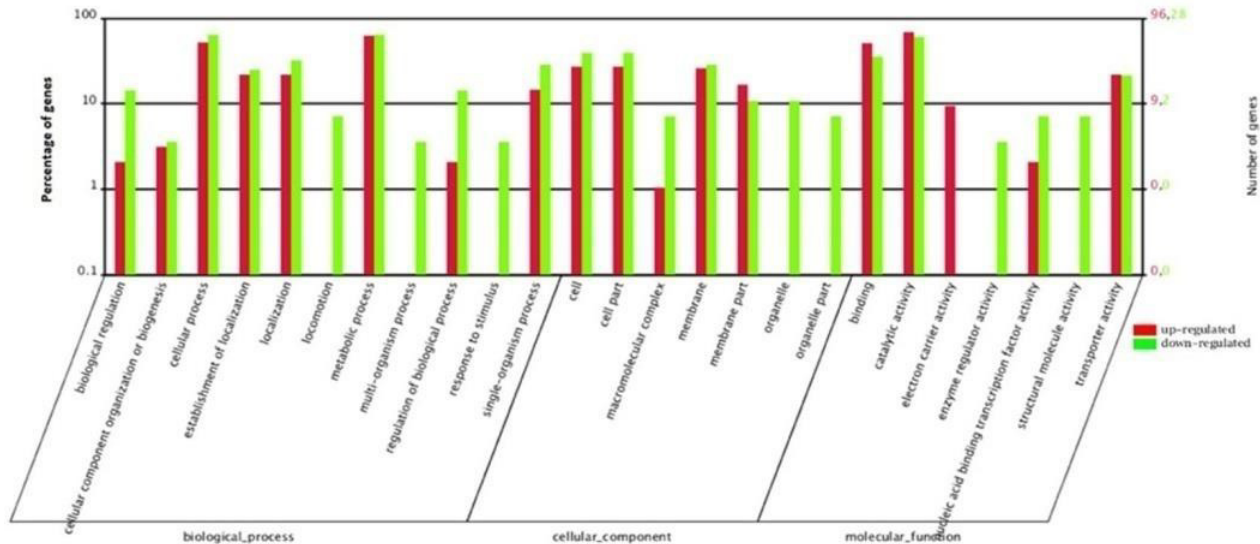
It is common practice to validate the DEGs found by the RNA-seq using another method, such as qRT-PCR. We therefore compared the qRT-PCR expression levels of 15 genes randomly selected from the wild type and mutant bacteria. The mean values of the  $\log_2$  ratio of the *eha* mutant to the wild type determined by qRT-PCR were in good agreement with the  $\log_2$  ratios of the *eha* mutant to the wild type from the RNA-seq analysis for 14 of the 15 genes (Figure 3), with a significant correlation noted for these genes ( $R^2=0.799>0.75$ ). There was only one exception (ETATCC-RS11570), therefore, the data from the qRT-PCR analysis validated the findings from the RNA-seq analysis.



**Figure 1S:** The randomness assessment of the clean reads of the eha mutant and its wild type ET13 mapped to the reference genome. The results showed that there were different sizes for the clean reads of the eha mutant (A) and the wild type ET13 (B) which were distributed in the reference genome of *E. tarda* ATCC15947.



**Figure 2S:** The coverage statistics of the clean reads of the eha mutant and the wild type ET13 bacteria mapped to the reference genome. The results showed that the coverage of the eha mutant (A) and the wild type ET13 (B) in over 90% of the clean reads exceeded 92% of the reference genome of *E. tarda* ATCC15947.



**Figure 2:** The numbers and functional categories of the DEGs between the wild type and eha mutant ET13. There were 147 DEGs in the eha mutant compared with the wild type bacteria ( $\log_2$  ratio  $\geq 1$ ). The functional categories of these genes shown were up-regulated (red color) and down-regulated (green color) by Eha in ET13 bacteria subjected to acid stress.

### Eha expression provides *E. tarda* with a survival advantage

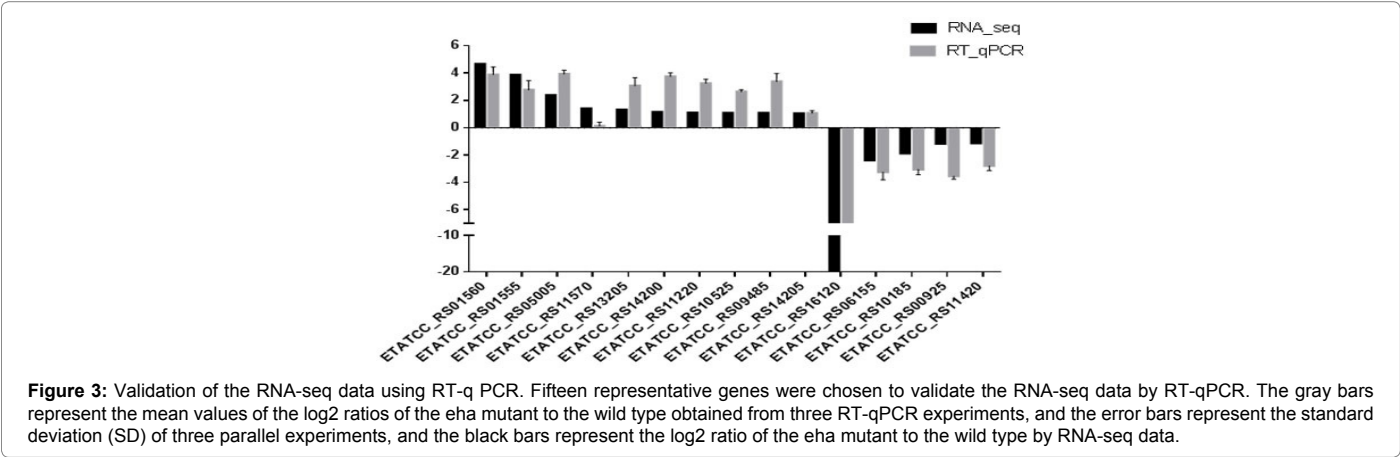
Our previous studies have shown that ET13 can survive within macrophages for extended periods of time [16]. It has been indicated that the acidification of phagosomes containing *Yersinia pseudotuberculosis* in macrophages can be blocked by BAF A1, a vacuolar proton-ATPase

pump inhibitor [25]. To better characterize the persistence of ET13 against acidification in macrophages and to follow the fate of the internalized bacteria after BAF A1 was used to block acidification, we first accurately monitored the survival rate of ET13 in the cells beginning the second hour post-infection by cell lysis and plate counting. As controls, other cells were cultured without the inhibitor. The pretreatment had

Pathway	Gene ID	Gene description	RNA-seq*
Two-component system	ETATCC_RS04225	hydrogenase 2 small subunit	1.229
	ETATCC_RS01230	multidrug transporter	1.133
	ETATCC_RS14195	glutaminase	1.096
	ETATCC_RS08165	3-demethylubiquinone-9 3-methyltransferase	1.082
	ETATCC_RS00005	serine dehydratase	1.080
	ETATCC_RS12655	serine dehydratase	1.045
	ETATCC_RS02740	transcriptional regulator	1.025
	ETATCC_RS06125	[citrate [pro-3S]-lyase] ligase	-3.916
	ETATCC_RS06135	citrate lyase subunit beta	-3.269
	ETATCC_RS06130	citrate lyase subunit gamma	-3.255
	ETATCC_RS07080	putative citrate transporter	-2.859
	ETATCC_RS06140	citrate lyase subunit alpha	-2.725
	ETATCC_RS06150	2-(5'-triphosphoribosyl)-3'-dephospho CoA synthase	-2.423
	ETATCC_RS06155	antiporter	-2.372
	ETATCC_RS06145	2-(5'-triphosphoribosyl)-3'-dephospho-CoA synthase	-2.347
	ETATCC_RS16525	protein tyrosine phosphatase	-2.234
	ETATCC_RS16530	polysaccharide export protein Wza	-2.202
	ETATCC_RS04890	amino acid transporter	-1.216
	ETATCC_RS16520	tyrosine protein kinase	-1.142
	ETATCC_RS11420	flagellar protein FliS	-1.115
Biosynthesis of secondary metabolites	ETATCC_RS10420	tryptophan synthase subunit alpha	2.208
	ETATCC_RS10415	tryptophan synthase subunit beta	1.787
	ETATCC_RS16110	inosine-5-monophosphate dehydrogenase	1.400
	ETATCC_RS02195	phosphoribosylglycinamide formyltransferase	1.383
	ETATCC_RS06795	threonine dehydratase	1.341
	ETATCC_RS14735	chorismate synthase	1.107
	ETATCC_RS08165	3-demethylubiquinone-9 3-methyltransferase	1.082
	ETATCC_RS00005	serine dehydratase	1.080
	ETATCC_RS10525	glyoxylate reductase	1.080
	ETATCC_RS12655	serine dehydratase	1.045
	ETATCC_RS12785	riboflavin synthase subunit alpha	1.041
	ETATCC_RS02280	succinyl-diaminopimelate desuccinylase	1.039
	ETATCC_RS04180	2-succinyl-5-enolpyruvyl-6-hydroxy-3- cyclohexene-1-carboxylate synthase	1.027
	ETATCC_RS15815	8-amino-7-oxononanoate synthase	1.026
	ETATCC_RS01185	siroheme synthase	1.001
	ETATCC_RS07360	gluconokinase	-3.176
	ETATCC_RS10185	hypothetical protein	-1.867
ABC transporters	ETATCC_RS16605	nickel ABC transporter ATP-binding protein	2.617
	ETATCC_RS16615	nickel ABC transporter permease protein NikB	2.467
	ETATCC_RS16600	nickel ABC transporter ATP-binding protein NikE	2.348
	ETATCC_RS16620	nickel ABC transporter substrate-binding protein	2.129
	ETATCC_RS16610	nickel ABC transporter permease protein NikC	2.055
	ETATCC_RS10370	amino acid ABC transporter substrate-binding protein	2.718
	ETATCC_RS11635	amino acid ABC transporter ATP-binding protein	1.631
	ETATCC_RS10375	cysteine ABC transporter permease	1.505
	ETATCC_RS07555	thiamine ABC transporter permease	1.193
	ETATCC_RS14735	chorismate synthase	1.107
	ETATCC_RS07595	iron ABC transporter permeaseABC	1.012
Flagellar assembly	ETATCC_RS04890	amino acid transporter	-1.216
	ETATCC_RS11420	flagellar protein FliS	-1.115
	ETATCC_RS14855	flagellar hook protein FlgK	-1.072
Microbial metabolism in diverse environments	ETATCC_RS14860	flagellar hook protein FlgL	-1.035
	ETATCC_RS10375	cysteine ABC transporter permease	1.505
	ETATCC_RS13205	acid phosphatase	1.313
	ETATCC_RS04225	hydrogenase 2 small subunit	1.229
	ETATCC_RS10905	phosphonoacetaldehyde hydrolase	1.212
	ETATCC_RS06430	haloacid dehalogenase	1.195

ETATCC_RS14735	chorismate synthase	1.107
ETATCC_RS13645	cytochrome C nitrite reductase	1.099
ETATCC_RS10525	glyoxylate reductase	1.080
ETATCC_RS09485	putative oxidoreductase	1.074
ETATCC_RS04220	hydrogenase	1.048
ETATCC_RS02280	succinyl-diaminopimelate desuccinylase	1.039
ETATCC_RS08725	3-mercaptopyruvate sulfurtransferase	1.036
ETATCC_RS07510	putative long-chain fatty-acid-CoA ligase	1.014
ETATCC_RS04215	putative NiFe-hydrogenase 2 b-type cytochrome subunit	1.011
ETATCC_RS01185	siroheme synthase	1.001
ETATCC_RS04315	thiosulfate sulfurtransferase	1.000
ETATCC_RS06135	citrate lyase subunit beta	-3.269
ETATCC_RS07360	gluconokinase	-3.176
ETATCC_RS06150	2-(5'-triphosphoribosyl)-3'-dephospho CoA synthase	-2.423
ETATCC_RS10185	hypothetical protein	-1.867
ETATCC_RS07075	5-oxopent-3-ene-1,2,5-tricarboxylate decarboxylase	-1.156

RNA-seq\*:  $\log_2 \text{Ratio}(\text{eha\_mutant\_ET13/wild\_ET13}) \geq 1.00$   
**Table 2:** The results of the KEGG pathway analysis of the eha-dependent genes differentially expressed under acid conditions.



no observable deleterious effects at the early time points (2 h). However, after four or six hours, the numbers of wild type and mutant bacteria recovered from BAF-treated macrophages were higher than those for the untreated cells ( $P < 0.05$ ) (Figure 4A). To more precisely determine the pH of the lumen of *E. tarda*-containing vacuoles, we employed a ratiometric assay in which Alexa Fluor 647/FITC-labelled *E. tarda* was used as a pH-sensitive probe. The pH in vacuoles containing the wild type or mutant recovered from BAF-treated macrophages was higher than that for the untreated cells at 2 h, 4 h and 6 h post-infection ( $P < 0.05$ ) (Figure 4B). These results showed that acidification is important for inhibiting the survival and replication of *E. tarda* in macrophages.

Second, we wanted to better explain how Eha regulates the resistance of *E. tarda* against acidification in macrophages and to compare the fates of the internalized wild type and mutant bacteria. The CFU of the wild type bacteria in untreated macrophages was higher than that of the mutant at 4 h and 6 h post-infection ( $P < 0.05$ ) (Figure 4A). Moreover, at the later time points (4 h, 6 h), there were no differences in the pH of vacuoles containing the wild type and mutant bacteria in untreated macrophages ( $P > 0.05$ ) (Figure 4B). Therefore, Eha may be involved in protecting the bacteria against the effects of acidification.

**The eha mutants exhibited decreased survival under acidic conditions**

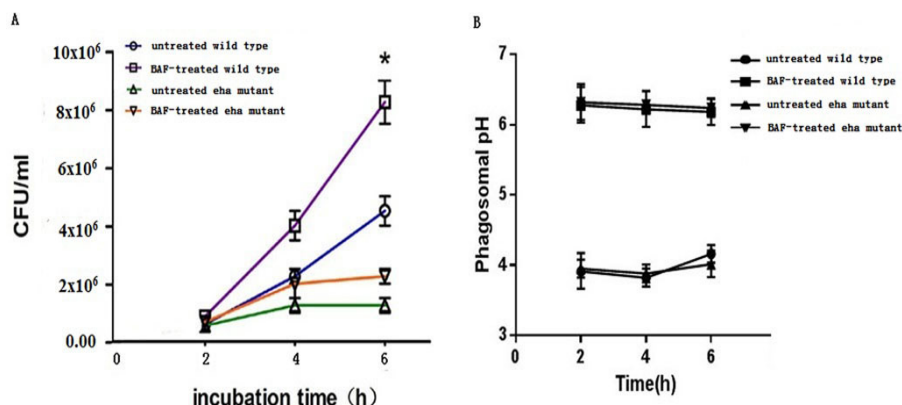
The *in vitro* bacterial survival rates were observed after the bacteria

were treated with different pH (7.2, 6.3, 5.5, 4.8, 4.3) LB for two hours. All strains (wild type, mutant and complemented) had reduced survival rates as the pH decreased (Figure 5). However, at the lower pH values (6.3, 5.5, 4.8, 4.3), the survival rates of the mutant were lower than those of the wild type bacteria ( $P < 0.05$ ). The survival rates of the complemented strains were between those of the wild type and mutant bacteria. These results suggest that the eha mutant was more susceptible to acid stress than the wild type bacteria, indicating that Eha is required for free-living ET13 to resist acid stress.

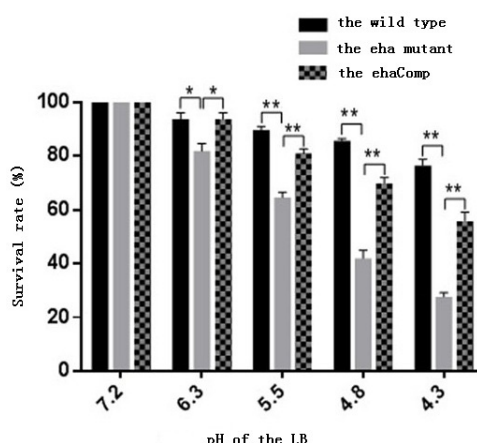
**Discussion**

In the present study, we examined under what conditions the EHAMPE expressed the strongest Eha activities. On the condition, we compared the whole transcriptomic profiles of the wild type ET13 and its eha mutant, and found 147 DEGs to adapt to acid stress. Moreover, our experiments showed that Eha was involved in protecting the bacteria against acid stress *in vitro* and against the effects of acidification *in vivo*.

To survive and adapt to their environment, bacteria integrate multiple signal conduction pathways, such as the two-component system (TCS), to mediate an appropriate cellular response [26]. Our study found that 20 genes that were differentially expressed between the ET13 wild type bacteria and eha mutant are involved in the TCS pathways, seven of which were down-regulated and 13 of which were up-regulated under acid stress. Most interestingly, these down-



**Figure 4:** Eha provides *E. tarda* with a survival advantage against acidification in macrophages. BAF-treated and untreated RAW264.7 cells were infected with the wild type and *eha* mutant *E. tarda* strains for 2 h at a MOI of 10, respectively. A. After designated time intervals (2, 4, 6 h) post-infection, the numbers of the colony-forming units (cfu) per milliliter of viable intracellular bacteria on the plates were counted. B. These cells were infected and labeled with FITC (pH-sensitive) and Alexa Fluor 647 (pH-insensitive) fluorescent dyes for 2 h, then were analyzed by flow cytometry to determine the ratio of the MFI emission between FITC and Alexa Fluor 647. Note : \* $P < 0.05$ , considered to be statistically significant.



**Figure 5:** The survival of *E. tarda* after treatment with different pH medium. The bacterial survival rates are presented as the percentages of the numbers of colonies derived from acid-treated cells after the treatment with different pH (7.2, 6.3, 5.5, 4.8, 4.3) LB for 2 h relative to untreated cells.  $P$  values are shown for the groups compared, which represented the wild type, mutant or complemented strains. Note : \* $P < 0.05$  and \*\* $P < 0.01$ , the difference was considered to be statistically significant.

regulated DEGs (ETATCC\_RS06125, ETATCC\_RS06135, ETATCC\_RS06130, ETATCC\_RS07080, ETATCC\_RS06140, ETATCC\_RS06155, ETATCC\_RS06145 and ETATCC\_RS06150) are all related to citric acid metabolism. The DEGs TATCC\_RS06140, ETATCC\_RS06135 and ETATCC\_RS06130 code for  $\alpha$ ,  $\beta$  and  $\gamma$  subunits of citric acid lyase C. The DEGs ETATCC\_RS06145 and ETATCC\_RS06150 encode citric acid lyase G subunits. Citric acid and its lyase are the intermediate product and critical enzyme of the tricarboxylic acid (TCA) cycle, respectively. The TCA cycle is critical for carbon metabolism and energy generation [27]. In a previous study, a lyase gene mutant *E. tarda* was unable to proliferate and cause fatal infection in a fish model [28].

The DEGs ETATCC\_RS14195 code for glutaminase, and both ETATCC\_RS00005 and ETATCC\_RS12655 code for serine dehydratases. Glutaminases in *Helicobacter pylori* deaminate glutamine to glutamate, resulting in the production of ammonia, which may be of significance in the pathogenesis of *H. pylori*-associated diseases [29]. The gene ETATCC\_RS06155 encodes an antiporter like a gastric proton pump. The pump in *H. pylori* is implicated in transient

hypochlorhydria, which facilitates gastric colonization and potentially triggers the epithelial progression to neoplasia [30]. The ETATCC\_RS16530 gene codes for an outer membrane protein that transports capsule polysaccharides from the periplasmic space to the bacterial surface. Polysaccharides may serve to protect organisms from harsh environmental conditions and to increase their virulence [31].

Our present transcriptomic analysis also discovered that 17 of the DEGs were associated with the biosynthesis of secondary metabolites, and these were significantly up-regulated under acid stress. Secondary metabolites are synthesized using primary metabolites as precursors and regulators, and the process is easily affected by the bacterial environment [32]. ETATCC\_RS10420 and ETATCC\_RS10415 encode tryptophan synthases. The tryptophan synthases in *Chlamydia trachomatis* regulate the bacterial survival rates in HeLa cells and the resistance to IFN- $\gamma$  [33]. ETATCC\_RS06795 encodes threonine dehydratase. The threonine dehydratase in *Streptococcus pneumoniae* contributes to the bacterial virulence and colonization in pneumococcal infection [34]. The findings suggest that these DEGs may regulate the virulence and survival of *E. tarda*.



Our transcriptomic analysis also found that Eha was associated with 12 up-regulated DEGs involved in ABC transporter systems, like oligopeptide permease (Opp) in the bacterial membrane that transports nickel, amino acids, thiamine, iron and so on [35]. Nickel enzymes have nickel in their active center, which is required for their biological function. Nickel enzymes include urease, hydrogenase, carbon monoxide dehydrogenase. The Opp1 ABC transporter in *Staphylococcus aureus* imports nickel and cobalt, and its mutant showed reduced mortality in terms of systemic infection and colonization of the bladder and kidneys in a urinary tract infection model [36]. Eha may regulate ABC transporter systems to control the entry of nickel and the other micronutrients into bacteria, and bacterial urease, hydrogenase and other nickel enzymes may affect the survival rates in different environments and may regulate the pathogenicity of *E. tarda*.

ETATCC\_RS11420, ETATCC\_RS14855, and ETATCC\_RS14860 encode FliS of the chaperone of flagellin FliC [37] and FlgK and FlgL of the flagellar hook, respectively [38]. The FlgM-FliA regulatory circuit plays a central role in coordinating bacterial flagellar assembly. FliS modulates FlgM activity as a chaperone to control late flagellar gene expression, motility and biofilm formation in *Yersinia pseudotuberculosis* [39]. A bacterial biofilm is a structured community of bacteria in a self-produced extracellular matrix, which allows the bacteria to adhere to a solid surface or biological tissue. The formation of biofilms apparently improves the ability of the bacteria to resist adverse environmental conditions.

Our RNA-seq analysis revealed that 20 of the DEGs, including ETATCC\_RS13205, are directly involved in bacterial metabolism under different circumstances, and participate in material synthesis and degradation, as well as energy metabolism networks. ETATCC\_RS13205 encodes an acid phosphatase, an enzyme which is associated with the synthesis of bacterial capsule I and IV, which takes part in bacterial resistance [40]. These findings are not only important to better understand the roles of the various DEGs in bacterial physiology, but will help to generally understand the full potential and evolution of protein phosphorylation for signal transduction, protein modification and homeostasis in all bacteria [41].

In summary, the high-throughput RNA-seq was used to examine the whole transcriptomic profile of *E. tarda* for the first time. Overall, we observed that Eha regulates 147 genes that affect the bacterial energy, metabolism, and virulence, which allow *E. tarda* to adapt to an acid environment. Therefore, these results could be helpful for further investigations of the molecule mechanism(s) underlying how *E. tarda* survive in macrophages under acidification.

## Acknowledgement

The work was supported by the National Nature and Science Foundation of China (No. 31570124).

## References

- Mohanty BR, Sahoo PK (2007) Edwardsiellosis in fish: a brief review. *J Biosci* 32: 1331-1344.
- Nelson JJ, Nelson CA, Carter JE (2009) Extraintestinal manifestations of *Edwardsiella tarda* infection: a 10-year retrospective review. *J La State Med Soc* 161: 103-106.
- Zhang L, Ni C, Xu W, Dai T, Yang D, et al. (2016) Intramacrophage Infection Reinforces the Virulence of *Edwardsiella tarda*. *J Bacteriol* 198: 1534-1542.
- Weiss G, Schaible UE (2015) Macrophage defense mechanisms against intracellular bacteria. *Immunol Rev* 264: 182-203.
- Okuda J, Takeuchi Y, Nakai T (2014) Type II secretion system genes of *Edwardsiella tarda* associated with intracellular replication and virulence in zebrafish. *Dis Aquat Organ* 111: 31-39.
- Leung KY, Siame BA, Tenkink BJ, Noort RJ, Mok YK (2012) *Edwardsiella tarda* -virulence mechanisms of an emerging gastroenteritis pathogen. *Microbes Infect* 14: 26-34.
- Srinivasa Rao PS, Yamada Y, Leung KY (2003) A major catalase (KatB) that is required for resistance to H<sub>2</sub>O<sub>2</sub> and phagocyte-mediated killing in *Edwardsiella tarda*. *Microbiol* 149: 2635-2644.
- Cheng S, Zhang M, Sun L (2010) The iron-cofactor oxidoreductase of *Edwardsiella tarda* inhibits macrophage-mediated innate immune response. *Fish Shellfish Immunol* 29: 972-978.
- Okuda J, Kiriya M, Suzuki E, Kataoka K, Nishibuchi M, et al. (2009) Characterization of proteins secreted from a type III secretion system of *Edwardsiella tarda* and their roles in macrophage infection. *Dis Aquat Organ* 84: 115-121.
- Rathman M, Sjaastad MD, Falkow S (1996) Acidification of phagosomes containing *Salmonella typhimurium* in murine macrophages. *Infect Immun* 64: 2765-2773.
- Alpuche Aranda CM, Swanson JA, Loomis WP, Miller SI (1992) *Salmonella typhimurium* activates virulence gene transcription within acidified macrophage phagosomes. *Proc Natl Acad Sci USA* 89: 10079-10083.
- Boschiroli ML, Ouahrani-Bettache S, Foulongne V, Michaux-Charachon S, Bourg G, et al. (2002) The *Brucella suis* virB operon is induced intracellularly in macrophages. *Proc Natl Acad Sci USA* 99: 1544-1549.
- Chakraborty S, Sivaraman J, Leung KY, Mok YK (2011) Two-component PhoB-PhoR regulatory system and ferric uptake regulator sense phosphate and iron to control virulence genes in type III and VI secretion systems of *Edwardsiella tarda*. *J Biol Chem* 286: 39417-39430.
- Gao D, Cheng J, Zheng E, Li Y, Shao Z, et al. (2014) Eha, a transcriptional regulator of hemolytic activity of *Edwardsiella tarda*. *FEMS Microbiol Lett* 353: 132-140.
- Gao D, Zhou X, Li Y, Xu Z, Sheng A, et al. (2016) The role of regulator Eha in *Edwardsiella tarda* pathogenesis and virulence gene transcription. *Microbiol Pathogen* 95: 216-223.
- Gao D, Li Y, Zheng E, Liu N, Shao Z, et al. (2016) Eha, a regulator of *Edwardsiella tarda*, required for resistance to oxidative stress in macrophages. *FEMS Microbiol Lett* 363.
- Wang H, Lei Y, Yan L, Cheng K, Dai X, et al. (2015) Deep sequencing analysis of transcriptomes in *Aspergillus flavus* in response to resveratrol. *BMC Microbiol* 15: 182-196.
- Janda JM, Abbott SL, Kroske-Bystrom S, Cheung WK, Powers C, et al. (1991) Pathogenic properties of *Edwardsiella* species. *J Clin Microbiol* 29: 1997-2001.
- Nong G, Zhang Z, Hu F, Chen H (1998) Cloning and analysis of the regulatory gene fragment induced with seed extract in *Rhizobium huakuii* strain 7653R. *Wei Sheng Wu Xue Bao* 38: 225-228.
- Sokolovska A, Becker CE, Ip WK, Rathinam VA, Brudner M, et al. (2013) Activation of caspase-1 by the NLRP3 inflammasome regulates the NADPH oxidase NOX2 to control phagosome function. *Nat Immunol* 14: 543-553.
- Welker DL, Hughes JE, Steele JL, Broadbent JR (2015) High efficiency Electrotransformation of *Lactobacillus casei*. *FEMS Microbiol Lett* 362: 1-6.
- Sun L, vanderSpek J, Murphy JR (1998) Isolation and characterization of iron-independent positive dominant mutants of the diphtheria toxin repressor DtxR. *Proc Natl Acad Sci USA* 95: 14985-14990.
- Wang H, Lei Y, Yan L, Cheng K, Dai X, et al. (2015) Deep sequencing analysis of transcriptomes in *Aspergillus flavus* in response to resveratrol. *BMC Microbiol* 15: 182-196.
- Livak KJ, Schmittgen TD (2001) Analysis of relative gene expression data using real-time quantitative PCR and the 2<sup>-ΔΔC<sub>T</sub></sup> Method. *Methods* 25: 402-408.
- Tsukano H, Kura F, Inoue S, Sato S, Izumiya H, et al. (1999) *Yersinia pseudotuberculosis* blocks the phagosomal acidification of B10. A mouse macrophages through the inhibition of vacuolar H<sup>+</sup>-ATPase activity. *Microb Pathog* 27: 253-263.
- Li Y, Xiao J, Liu Q, Wu H, Zhang Y, et al. (2012) Systematic mutation analysis of two-component signal transduction systems reveals EsrA-EsrB and PhoP-PhoQ as the major virulence regulators in *Edwardsiella tarda*. *Vet Microbiol* 157: 190-199.

27. Spaans SK, Weusthuis RA, van der Oost J, Kengen SW (2015) NADPH-generating systems in bacteria and archaea. *Front Microbiol* 6: 742.
28. Srinivasa Rao PS, Lim TM, Leung KY (2003) Functional genomics approach to the identification of virulence genes involved in *Edwardsiella tarda* pathogenesis. *Infect Immun* 71: 1343-1351.
29. Stark RM, Suleiman MS, Hassan IJ, Greenman J, Millar MR (1997) Amino acid utilisation and deamination of glutamine and asparagine by *Helicobacter pylori*. *J Med Microbiol* 46: 793-800.
30. Hammond CE, Beeson C, Suarez G, Peek RM, Jr Backert S, et al. (2015) *Helicobacter pylori* virulence factors affecting gastric proton pump expression and acid secretion. *Am J Physiol Gastrointest Liver Physiol* 309: G193-G201.
31. Cooper CA, Mainprize IL, Nickerson NN (2015) Genetic, Biochemical, and Structural Analyses of Bacterial Surface Polysaccharides. *Adv Exp Med Biol* 883: 295-315.
32. Locatelli FM, Goo KS, Ulanova D (2016) Effects of trace metal ions on secondary metabolism and the morphological development of *Streptomyces*. *Metallomics* 8: 469-480.
33. Muramatsu MK, Brothwell JA, Stein BD, Putman TE, Rockey DD, et al. (2016) Beyond Tryptophan Synthase: Identification of Genes That Contribute to *Chlamydia trachomatis* Survival during Gamma Interferon-Induced Persistence and Reactivation. *Infect Immun* 84: 2791-2801.
34. Yan W, Wang H, Xu W, Wu K, Yao R, et al. (2012) SP0454, a putative threonine dehydratase, is required for pneumococcal virulence in mice. *J Microbiol* 50: 511-517.
35. Locher KP (2016) Mechanistic diversity in ATP-binding cassette (ABC) transporters. *Nat Struct Mol Biol* 23: 487-493.
36. Remy L, Carrière M, Derré-Bobillot A, Martini C, Sanguinetti M, et al. (2013) The *Staphylococcus aureus* Opp1 ABC transporter imports nickel and cobalt in zinc-depleted conditions and contributes to virulence. *Mol Microbiol* 8794: 730-743.
37. Furukawa Y, Inoue Y, Sakaguchi A, Mori Y, Fukumura T, et al. (2016) Structural stability of flagellin subunit affects the rate of flagellin export in the absence of FliS chaperone. *Mol Microbiol* 2102: 405-416.
38. Homma M, DeRosier DJ, Macnab RM (1990) Flagellar hook and hook-associated proteins of *Salmonella typhimurium* and their relationship to other axial components of the flagellum. *J Mol Biol* 13: 819-832.
39. Xu S, Peng Z, Cui B, Wang, T, Song Y, et al. (2014) FliS modulates FlgM activity by acting as a non-canonical chaperone to control late flagellar gene expression, motility and biofilm formation in *Yersinia pseudotuberculosis*. *Environ Microbiol* 16: 1090-1104.
40. Caselli A, Paoli P, Santi A, Mugnaioni C, Toti A, et al. (2016) Low molecular weight protein tyrosine phosphatase: Multifaceted functions of an evolutionarily conserved enzyme. *Biochim Biophys Acta* 1864: 1339-1355.
41. Mijakovic I, Grangeasse C, Turgay K (2016) Exploring the diversity of protein modifications: special bacterial phosphorylation systems. *FEMS Microbiol Rev* 40: 398-417.