

A Comparative Study of New Castle Disease Virus Isolated From Poultry with Standard Velogenic Strain

Karmakar DB^{1*}, Majee SB², Karikkathil SS³, Seth D⁴ and Mondal S⁵

¹Block Animal Health Center, Contai-III, Purba Medinipur, India

²Department of Microbiology, Bombay Veterinary College, Parel, Mumbai-400012, India

³Krishni Vigyan Kendra Ernakulam, Narakkal-post, Ernakulam district, Kerala-682 505, India

⁴Block Animal Health Center, Sitai, Coachbihar, W.B, India

⁵Additional Block Animal Health Center, Balarampur, Puruila, W.B, India

Abstract

Newcastle disease [avian paramyxovirus serotype 1 (APMV-1)] is highly prevalent in poultry throughout India. The present study was undertaken to extrapolate the pathogenicity of a field isolate of Newcastle disease virus (NDV) in comparison with velogenic BOM-1 isolate (AY 294125). The field NDV isolate and the BOM-1 isolate were propagated in SPF eggs and the infected allantoic fluids were used for characterization of pathotype. The Mean Death Time (46 hours), Intracerebral Pathogenicity Index (1.74), Intravenous pathogenicity Index (2.01) were enumerated to find out the pathotype of the virus. The field NDV isolate was able to agglutinate mammalian erythrocytes except equine RBCs, stable at 56°C for 60 mins and proved to be a rapid eluter. It formed plaques (5.39 x 10⁶ PFU/ml) in chick embryo fibroblast with characteristic cytopathic effects of velogenic NDV comparable with BOM-1 isolate. The viral proteins that were detected by SDS-PAGE were HN (76 KD), F (66 KD), NP (55 KD) and M (44 KD). The total protein in the field virus isolate was determined to be 18.75 mg%, which was lower than that of the total proteins in BOM-1 isolate (45 mg%). The field virus contained 28.83 mg% of total lipids and 4.98 mg% total carbohydrates, which were more or less similar to that of BOM-1 isolate and that of allantoic fluid. On the basis of all the biological and the chemical tests conducted, the field virus isolate included in this present study was characterized as velogenic viscerotropic strain of NDV.

Keywords: New castle disease virus; Pathotype; Velogenic viscerotropic strain; Specific pathogen free embryonated eggs; Chick embryo fibroblast; Cytopathic effect

Introduction

Newcastle disease (ND) is a severe avian disease of high prevalence and great economic importance in India. It is caused by avian paramyxovirus serotype 1 (APMV-1), which shows variable pathogenicity and severity depending on the virulence of its pathotypes [1]. ND is a single greatest constraint on the production of village poultry [2-4]. Serological surveys indicate the presence of the virus in village poultry in countries throughout Asia and Africa, and where virus isolation has been attempted; virulent strains have been found [5]. Geographical distribution of NDV is often confused due to the indiscriminate use of live vaccines in most of the countries throughout the world [6]. Therefore, zone wise proper characterization of the strains of NDV with effective and validated pathotyping is required for planning of an effective control programme against this disease. In this perspective, the present study was carried out using several pathotype determining tests which were conducted to characterize a field NDV isolate of poultry in comparison with a standard velogenic strain of NDV ("BOM-1 isolate" bearing accession No. AY294125).

Materials and Methods

Viruses

NDV was isolated from a severe outbreak at a poultry farm (mortality-89.13%) in the Konkan (latitude-17°N and longitude-73°19'E) region of Maharashtra in the year 2007. The spleen and liver of the dead birds were aseptically collected in sterile antibiotic supplemented medium (MEM-199, Sigma) and dispatched in chilled condition to the Department of Microbiology, Bombay Veterinary College. The samples were aseptically triturated with Phosphate buffer

solution and a 10% suspension was made. Thereafter, the solution was passed through syringe filter (pore size 0.22 µm) and 0.1 ml of the filtrate was inoculated aseptically in 10 days old embryonated Specific pathogen free (SPF) eggs (Venkateshwara Hatcheries Ltd., Pune). The eggs were incubated at 37°C for virus propagation. After the death of the embryos allantoic fluid was aseptically collected, pooled, and stored in -20°C for further use. BOM-1 isolate (accession No. AY294125) was obtained from Department of Microbiology, Bombay veterinary college. R₂B-Mukteshwar and LaSota Standard Vaccine Strains were purchased from Hester pharmaceuticals Ltd, India.

Detection of viral virulence

The infected allantoic fluid was subjected to Haemagglutination test and further embryo infective dose of the virus was estimated. The mean death time (MDT) of the virus was calculated in SPF chick embryos of ten days of age according to the method of Hanson and Brandley [7]. The intra cerebral pathogenicity index (ICPI) and intravenous pathogenicity index (IVPI) were enumerated according to the method of Allan et al. [8] in SPF chicks (*Gallus domesticus*). The chicks used in the experiment of ICPI and IVPI were day-old and eight-weeks-old

*Corresponding author: Dibyendu Bikash Karmakar, C/O Kanai Seth, Vill-Seth Colony, PO+PS-Kaliyaganj, Dist-Uttar Dinajpur, 733129, India, Tel: +919475724596; E-mail: mdibyendubikash@gmail.com, dibmicro@rediffmail.com

Received April 01, 2015; Accepted April 23, 2015; Published April 25, 2015

Citation: Karmakar DB, Majee SB, Karikkathil SS, Seth D, Mondal S (2015) A Comparative Study of New Castle Disease Virus Isolated From Poultry with Standard Velogenic Strain. J Veterinar Sci Technol 6: 231. doi:10.4172/2157-7579.1000231

Copyright: © 2015 Karmakar DB, et al. This is an open-access article distributed under the terms of the Creative Commons Attribution License, which permits unrestricted use, distribution, and reproduction in any medium, provided the original author and source are credited.

respectively and were purchased from Venkateshwara Hatcheries Ltd., Pune. The experimental procedures and care of animals were approved by the Animal Experiment Committee of National Institute of Animal Health.

Biological characterization of the virus

The thermostability of haemagglutinin of the infected allantoic fluid was tested after heat treatment at 37°C ± 0.5°C, 56°C ± 0.5°C, 60°C ± 0.5°C for selected time periods. Thereafter, the corresponding HA titer and infective titer in SPF eggs of the heat treated allantoic fluid was enumerated. The neuraminidase activity of the field virus isolate was assessed by testing the haemagglutination elution patterns in which the time required by the virus to completely elute from the agglutinated chicken erythrocytes was recorded at 4°C. The ability to agglutinate mammalian erythrocytes was checked by using 1% suspension of erythrocytes from guinea pig, sheep, goat, cow, rabbit, horse and 0.5% suspension of pig erythrocytes. Plaque formation on primary chick embryo fibroblast cell culture was used to differentiate between the strains of the virus. Plaque assay was carried out as per method of Barahona and Hanson [9] for the demonstration and titration of NDV in primary chicken embryo fibroblast (CEF) culture in a 24 well tissue culture plate. Tenfold dilution (10⁻¹ to 10⁻¹³) of the virus was made in PBS and infected in CEF monolayer following which cell layer was overlaid with 1.5% agarose. The tissue culture plate was incubated at 37°C and kept under observation for formation of plaques upto 96 hours. The monolayers were stained with 0.01% neutral red and plaques were observed for their differential characteristics under an inverted light microscope.

Comparative cytopathogenicity study on primary chick embryo fibroblast culture (PCEF)

Qualitative study of virus replication in PCEF based on cytopathic effects (CPE) was carried out. The test was conducted for studying temporal development of the CPE of field isolate keeping the BOM-1 virus as positive control. Confluent monolayers were allowed to develop on sterile tissue culture grade coverslips in growth medium (MEM-199, supplemented with 10% fetal calf serum, Sigma) in lightons tubes. Subsequently, the monolayers were infected with neat

virus of 10 µl quantity and were incubated at 37°C with maintenance medium (MEM-199 supplemented with 2% fetal calf serum, Sigma) and kept under observation for CPE upto 96 hours. The cover slips were removed at 0 hrs, 12 hrs, 24 hrs, 36 hrs, 48 hrs, 60 hrs, 72 hrs, 84 hrs and 96 hrs post infection (PI) and stained with May-Grunwald-Giemsa stain(MGG) and Crystalviolet stain.

Comparative chemical characterization of NDV

The molecular weights of the electrophoretic protein fractions of freeze dried field NDV isolate were studied by sodium dodecyl sulphate-polyacrylamide gel electrophoresis as per the method of Moore and Burke [10]. The total proteins, lipids and carbohydrates of the freeze dried virus were estimated by modified Lowry's method [11], Knight method [12] and Ada and Gottschalk method [13] respectively. Further, all of the above stated chemical properties of the field virus isolate of NDV were compared with BOM-1 isolate, R₂B and LaSota. All the chemicals used in these tests were purchased from Bangalore Genie and S.D. Fine Chemicals limited.

Results

Comparison of pathogenicity and biological properties of the viruses

The results of haemagglutinating titers, embryo infective dose, MDT, ICPI, IVPI, thermostability of haemagglutinin, rate of elution, agglutination of mammalian erythrocytes and plaque forming unit per ml of the propagated field virus isolate and the BOM-1 isolate are shown in Table 1.

The field virus isolate and the BOM-1 Isolate was capable to agglutinate the erythrocytes of guinea pig, sheep, goat, cow, rabbit, and pig except equine RBCs. The field virus isolate and BOM-1 isolate exhibited elution after 33 minutes and 29 minutes respectively. After resuspension of erythrocytes at 24 hours, elution was recorded after 75 minutes and 55 minutes respectively for Field virus and BOM-1 isolate. The field virus isolate was found to be capable of producing plaques of diverse morphology on chick embryo fibroblast similar to those produced by the velogenic strain of BOM-1 isolate. The plaques

Test viruses	H.A titer	EID ₅₀ u/ml	MDT hours	ICPI	IVPI	Thermostability of Haemagglutinins	Rate of Elution	Agglutination of mammalian RBC	PFU in CEF (PFU/ml)
Field virus isolate	64	10 ^{7.14}	46	1.74	2.01	inactivated at 60°C within 15 minutes	rapid eluter	Agglutinates mammalian RBC except equine RBC	5.39 × 10 ⁶
BOM-1 isolate	512	10 ^{8.3}	38	1.8	2.63	inactivated at 60°C within 30 minutes	rapid eluter	Agglutinates mammalian RBC except equine RBC	6.35 × 10 ⁶

Table 1: Showing the comparison of the biological characteristics of field virus isolate and BOM-1 isolate.

Sl no.	Time intervals of observation	Cytopathic effects in CEF from 0 hours PI to 96 hours PI	
		Field virus isolate	BOM-1 isolate
1	0 hour	No CPE observed	No CPE observed
2	12 hours	No CPE observed	No CPE observed
3	24 hours	Rounding of cells, small cytoplasmic vacuolations	Same CPE but more intense and prominent.
4	36 hours	Variable sizes of plaques, discrete clumping of cells.	Comparatively larger sizes of plaques and cell clumps.
5	48 hours	Formation of Syncytia, Number and diameter of plaques increased.	Large cell clumps and plaques but no syncytia observed.
6	60 hours	Mild coalescence of plaques.	Syncytia and coalescence of plaques.
7	72 hours	large syncytia observed, Disintegration of cell sheet started.	Syncytia formation, Coalescence of plaques, large areas of cell destruction and disintegration,
8	84 hours	Large cell clumps, Disorganization of monolayer.	Disorganization of monolayer and Large cell clumps floating on superficial media.
9	96 hours	Absence of cellular morphology and cell organization	Detachment of cell sheet from the adhering surface.

Table 2: Comparative observations of CPE in different time intervals in Chick embryo fibroblast monolayers infected with Field Virus isolate and BOM-1 isolate.

generated by the field virus isolate were large and irregular in shape whereas some showed minute clearings of the cells. The results of the comparative study of replication of the field virus isolate and BOM-1 (control) on the basis of cytopathic effects in CEF culture stained with May-Gruenwald Giemsa and Crystal violet stain (Figures 1-6).

The characteristic cytopathic effects which were recorded in the infected CEF monolayer from 0 hours PI to 96 hours PI are shown

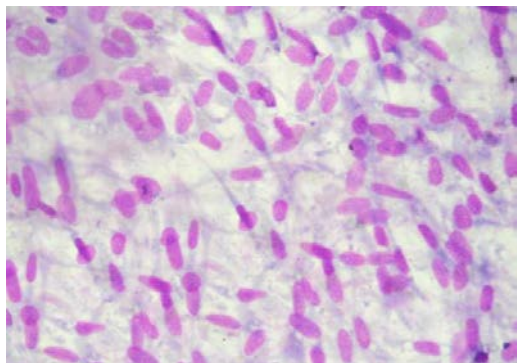


Figure 1: MGG stained PCEF monolayer at 0 hr of infection with Field virus isolate (400X).

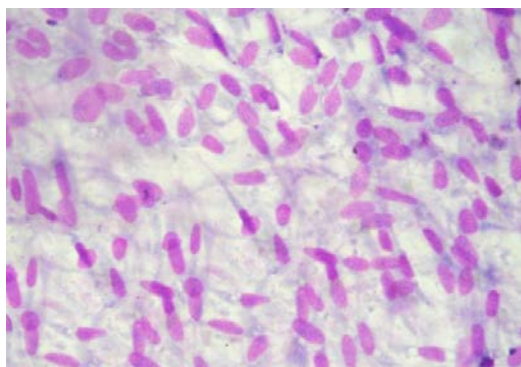


Figure 2: MGG stained PCEF monolayer after 60 hrs of infection with BOM-1 isolate showing plaques (a) of variable sizes and coalescence of plaques (b) (100X).

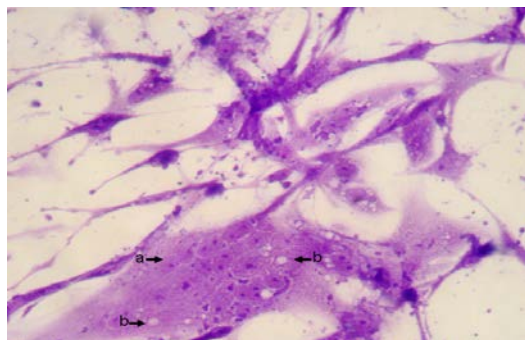


Figure 3: Crystal Violet stained PCEF monolayer after 72 hrs of infection with Field virus isolate showing large syncytia (a) and cytoplasmic vacuoles (b) (400X).

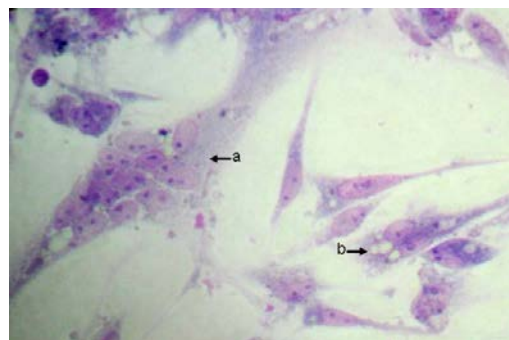


Figure 4: MGG stained PCEF monolayer after 72 hrs of infection with BOM-1 isolate showing syncytia (a) and cytoplasmic vacuoles (b) (400X).

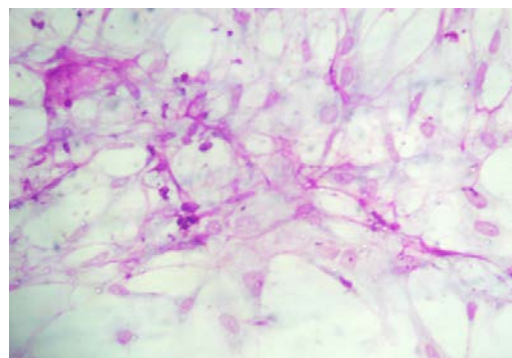


Figure 5: MGG stained PCEF monolayer after 96 hrs of infection with Field virus isolate showing absence of cellular morphology and cell organization (400X).

in Table 2. However, the uninfected CEF monolayer which was maintained as negative control throughout the experiment remained intact till 96 hours PI.

Comparative chemical characteristics of the viruses

The field NDV isolate, BOM-I isolate, R₂B and LaSota showed four prominent protein fractions (Figure 7) in SDS-PAGE. In all the NDV strains subjected to present protein fraction analysis study, three major proteins viz. haemagglutinin-neuraminidase (HN), fusion (F) protein and nucleoprotein (NP) were identified. The molecular weights of these proteins were 76 KD, 66 KD and 55 KD respectively. The matrix (M) protein was identified as minor protein (MW 42 KD), which is in accordance with Kumanan et al. [14].

The estimation of total proteins, lipids and carbohydrates of NDV field isolate in comparison with BOM-1 isolate, LaSota, R₂B and uninfected allantoic fluid is shown in (Figure 8).

Discussion

The values of MDT, ICPI and IVPI suggest that the field virus isolate was a velogenic strain of NDV. Further these results are in conformity with the positive control (velogenic BOM-1 isolate) and meet the specifications of OIE [15]. In both ICPI and IVPI tests all chicks except the controls showed characteristic symptoms resembling velogenic viscerotropic strain of NDV. The chicks subjected to ICPI revealed torticollis, paralysis of legs and weakness prior to death. Whereas,

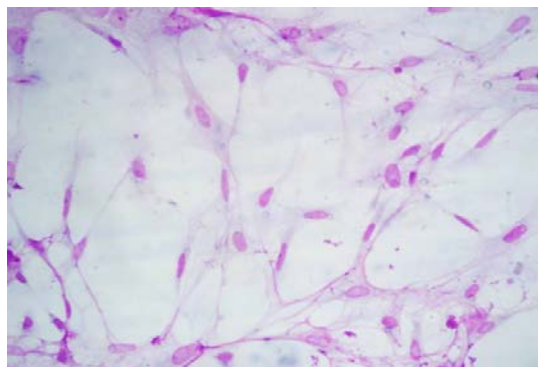


Figure 6: MGG stained PCEF monolayer after 96 hrs of infection with BOM-1 isolate showing disorganization of monolayer and detachment of cell sheet (400X).

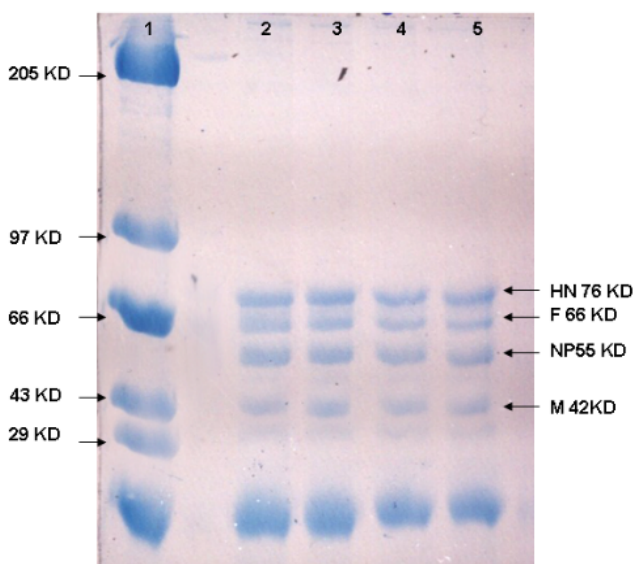


Plate 7. Protein profile of different strains of NDV.
 lane -1 : molecular weight marker proteins (Bangalore genei, Bangalore).
 lane -2 : Velogenic field isolate.
 lane -3 : V-NDV BOM-1 isolate .
 lane -4 : LaSota.
 lane -5 : R₂B.

Figure 7: Protein profile of different strains of NDV.

pinpoint haemorrhages in the proventriculus and caecal tonsils were observed in both of the groups (intracerebrally inoculated groups in ICPI and intravenously inoculated groups in IVPI). These findings are in conformity with Pant et al. [16] and Vijayarani et al. [17]. Further MDT, ICPI and ICPI values indicate that the field virus isolate was less virulent than BOM-I isolate. From the results of thermostability of haemagglutinin, the field virus isolate was found to be thermostable as velogenic BOM-I isolate of NDV. For instance, the velogenic isolates characterized by Roy et al. [18] remained thermostable for at least 90 minutes whereas the lentogenic isolates, characterized by King and Seal [19], lost their haemagglutinating activity within 15 minutes. On the basis of haemagglutination elution patterns, the virus can be classified

as a “rapid eluter”, indicating higher neuraminidase activity. As the rate of elution appeared to be independent of other viral properties, it can serve as a marker for differentiating strains of NDV [20]. Diversities in plaque morphology in NDV infected PCEF monolayers is a distinct characteristic of velogenic strain of NDV as observed by Schloer and Hanson [21]. The cytopathic effects observed in the infected cell layer in this present study were characteristic of velogenic strain of NDV. The replications traits of viruses as observed in the cytopathogenicity study revealed that the BOM-I isolate replicates faster in PCEF and are more cyto-lytic as well as lethal to the cells. The protein profile of the field isolate, BOM-I isolate, LaSota and R₂B suggested no alterations in structural proteins of these strains of NDV [22]. As v-NDV is an enveloped virus, it is composed of lipids, carbohydrates and proteins. The strain-to-strain variation of virulence of NDV may be attributed to the little differences in viral proteins, lipids and carbohydrates. These results in this present study indicate that the field virus isolate, BOM-I isolate, LaSota and R₂B contained greater amount of total proteins than that of uninfected allantoic fluid suggesting that the increased values probably represented proteins of viral origin. Moreover it was found that the total proteins in the field virus isolate was lesser in amount than that of BOM-I isolate but greater than that of the vaccine strains of NDV viz. LaSota and R₂B. The total lipids and carbohydrate contents of all the NDV strains were found to be more or less similar to that of uninfected allantoic fluid. It is because lipids and carbohydrate of the host material are incorporated in the viral envelope during maturation and budding [23].

On the basis of the results of pathotype specific tests viz. MDT, ICPI, IVPI, agglutination of mammalian RBCs, thermostability of haemagglutinins, rate of elution and ability to form plaques in CEF, the field isolate of NDV in the present study can be classified as a velogenic Viscerotropic strain. The field isolate was found to be a less virulent than the standard velogenic isolate BOM-I. The present study clearly demonstrates that MDT, ICPI and IVPI are most efficient tools for strain differentiation of NDV in epidemiological point of view. The comparative pathobiology of field NDV isolate and BOM-I isolate in gallinaceous poultry was clearly correlated with biochemical properties of virus and cytopathogenicity in PCEF.

Acknowledgement

The work of D. B. Karmakar was fully supported and funded by the Bombay veterinary college, Maharashtra Animal and Fishery Sciences University, Nagpur, India.

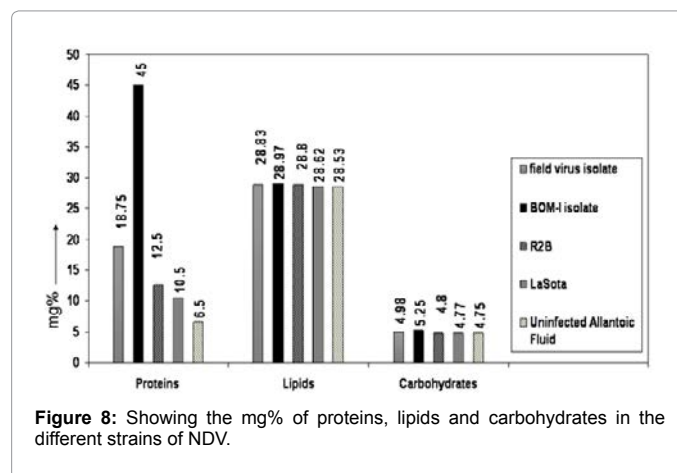


Figure 8: Showing the mg% of proteins, lipids and carbohydrates in the different strains of NDV.

References

- Hanson RP (1980) Newcastle disease. In: Hitchner SB, Purchase HG, Williams JE (eds) *Isolation and Identification of Avian Pathogens*, AAAP, College Station, Texas, USA, pp. 63-66.
- Alders RG, Spradbrow PB (2001) SADC Planning Workshop on Newcastle Disease Control in Village Chickens. *ACIAR Proceedings No. 103*, pp. 158.
- Alexander DJ (1998) In: Swayne DE, Glisson JR, Jackwood MW, Pearson JE, Reed WM (eds) *A Laboratory Manual for the Isolation and Identification of Avian Pathogens* (4th edn.) American Association of Avian Pathologists, Kennet Square, pp. 156-163.
- Kitalyi AJ (1998) Village chicken production systems in rural Africa: Household food security and gender issues. *FAO Animal Production and Health Paper No. 142*. Rome, FAO.
- Spradbrow PB (1993) Newcastle disease in village chickens. *Poultry Science Review* 5: 57-96.
- Alexander DJ (2001) Newcastle disease - The Gordon Memorial Lecture. *British Poultry Science* 42: 5-22.
- Hanson RP, Brandley CA (1955) Identification of vaccine strains of Newcastle Disease. *Science* 122: 156-157.
- Allan WH, Lancaster JE, Toth B (1978) Newcastle Disease Vaccines (for poultry): Their Production and Use. *Food and Agriculture Organization of the United Nations. Animal Production and Health Series No.10*.
- Barahona HH, Hanson RP (1968) Plaque enhancement of Newcastle Disease virus (Lentogenic strains) by magnesium and diethylaminoethyl dextran. *Avian Disease* 12: 151-158.
- Moore NF, Burke DC (1974) Characterization of the structural proteins of different strains of Newcastle disease virus. *Journal of General Virology* 25: 275-289.
- Hartee EF (1972) Determination of protein; A modification of the Lowry method that gives a linear photometric response. *Annals of Biochemistry* 48: 422-427.
- Knight CA (1975) *Chemistry of Viruses* (2nd edn), Springer-Verlag Wien publication, New York, Pp. 30-148.
- Ada GL, Gottschalk A (1956) The component sugars of the Influenza Virus particle. *Biochemistry Journal* 62: 686-689.
- Kumanan K, Mushtaq JM, Ventatesan RA (1994) Protein profile of some strains of Ranikhet disease virus. *Indian Journal of Animal Science* 64: 319-321.
- Office International Des Epizooties (OIE) (2004) *Manual of Diagnostic Tests and Vaccines for Terrestrial Animals*, OIE Standards Commission (eds), (5th Edn).
- Pant N, Rao VDP, Garg SK, Chandra R (1995) Characterization of field isolate of Newcastle disease virus. *Indian Journal of Virology* 11: 39-41.
- Vijayarani K, Kumanan KSE, Albert A, Padmanabhan VD (1992) Characterization of Field Isolates of Newcastle Disease Virus. *Indian Veterinary Journal* 69: 584-588.
- Roy P, Venugopalan AT, Manvell R (2000) Characterization of Newcastle Disease Viruses isolated from Chickens and Ducks in Tamilnadu. *Veterinary Research Communication* 24: 135-142.
- King DJ, Seal BS (1998) Biological and molecular characterization of Newcastle disease virus (NDV) field isolate with comparison to reference NDV strains. *Avian Disease* 42: 507-516.
- Spalatin J, Hanson RP, Beard PD (1970) The Haemagglutination Elution Pattern as a Marker in characterizing Newcastle Disease Virus. *Avian Disease* 14: 542-549.
- Schloer GM, Hanson RP (1968) Relationship of Plaque size and Virulence for chickens of 14 Representative Newcastle disease virus strain. *Journal of Virology* 2: 40-47.
- Sambasivan N, Majee SB, Sherikar AA (2001) Protein profile of field isolates and vaccine strains of Newcastle disease virus. *Indian Journal of Animal Science* 71: 764-765.
- Klenk HD, Choppin PW (1969) Chemical composition of the parainfluenza virus SV5. *Virology* 37: 155-157.