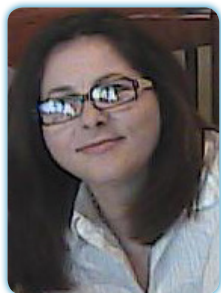


4<sup>th</sup> International Conference on

# Forensic Research & Technology

September 28-30, 2015 Atlanta, USA



## Mihaela Brooks

*Criminal Investigative Analyst, Canada*

### Applying criminal and geo-profiling elements to crime scene analysis

Crime scene analysis as a distinctive concept of criminal investigation is a multidisciplinary approach of analyzing and connecting the information collected from various sources derivable from the scene. Academically, there are antagonistic discussions on what crime scene analysis is and who qualifies to perform it. In the real world during the reactive investigative process of the criminal investigation, the investigator has the task to analyse the information/data, to identify, apprehend the offender and to provide evidence in the court. With regard to the analysis of data, the investigators, academics and forensic scientists – each with his/her own educational and work background – have the same goal of answering the investigative questions, but their worlds still remain disconnected and each invokes motives for the shortcomings of an investigation. There is a separation between theory, research and practice. This presentation attempts to bridge the gap between the research and methodologies used by profilers to the “on the scene” analysis of a criminal event and to improve police practices.

### Biography

Mihaela Brooks, Director of Forensic Psychology at Psychological Profiler Academy. The area of expertise of Mrs. Mihaela Brooks include: Certified Anti-Terrorism Specialist: Anti-Terrorism Accreditation Board (USA), Criminal Profiler / Criminal Investigative Analyst, Criminal Intelligence Analyst, FBI Profiling Methodology, Critical Infrastructure Protection, Micro & Subtle Expressions of Emotion, Crime Scene Profiling.

[mihbrooks@yahoo.com](mailto:mihbrooks@yahoo.com)

### Notes: